

# PLANCHES

PLANCHE I

EXPLICATION DE LA PLANCHE I

---

*Cosmarium kivuense*, n. sp.

(× 1500)

Fig. 1 à 11. — Vue latérale.

Fig. 13 à 15. — Vue frontale.

Fig. 16. — Coupe transversale.

Fig. 12, 17, 18. — Vue latérale, coupe transversale, vue frontale de  
*Cosmarium* sp. (d'après WEST, *l. c.*).

---

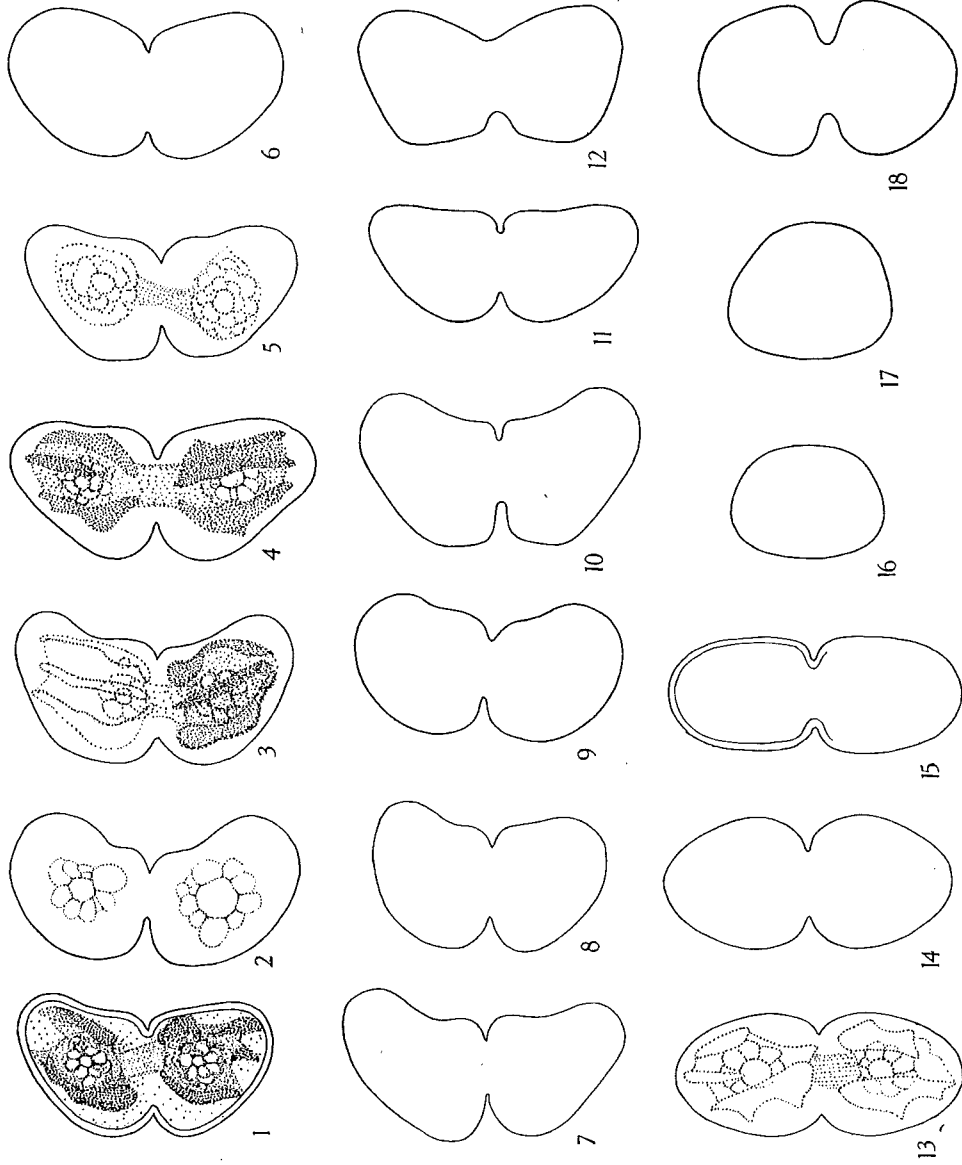


PLANCHE II

EXPLICATION DE LA PLANCHE II

---

- Fig. 1. — *Crucigenia rectangularis* (BRAUN) GAY, 335.  
Fig. 2. — *Crucigenia cuneiformis* (SCHMIDLE) BRUNNTHALER, 335.  
Fig. 3. — *Crucigenia tetrapedia* (KIRCHN.) WEST, 173.  
Fig. 4. — *Crucigenia excavata* n. sp., 333.  
Fig. 5. — *Crucigenia triangularis* CHOD., 351.  
Fig. 6. — *Kirchneriella obesa* (WEST) SCHMIDLE, 336.  
Fig. 7. — *Kirchneriella lunaris* (KIRCHN.) MOEB., 137.  
Fig. 8. — *Selenastrum gracile* REINSCH, 53.  
Fig. 9. — *Scenedesmus crassus* CHOD., 140.  
Fig. 10. — *Scenedesmus carinatus* f. *denticulata* nov., 129.  
Fig. 11. — *Scenedesmus* sp., 140.  
Fig. 12. — *Scenedesmus carinatus* (LEMM.) CHOD., 7.  
Fig. 13. — *Scenedesmus longispina* var. *capricornus* SKUJA, 61.  
Fig. 14. — *Scenedesmus cristatus* n. sp.  
Fig. 15. — *Scenedesmus bijugatus* (TURP.) KÜTZ., 53.  
Fig. 16. — *Scenedesmus dispar* BRÉB., 53.  
Fig. 17. — *Scenedesmus acutiformis* SCHRÖD., 130.

(Grossissement : environ 750 ×)

---

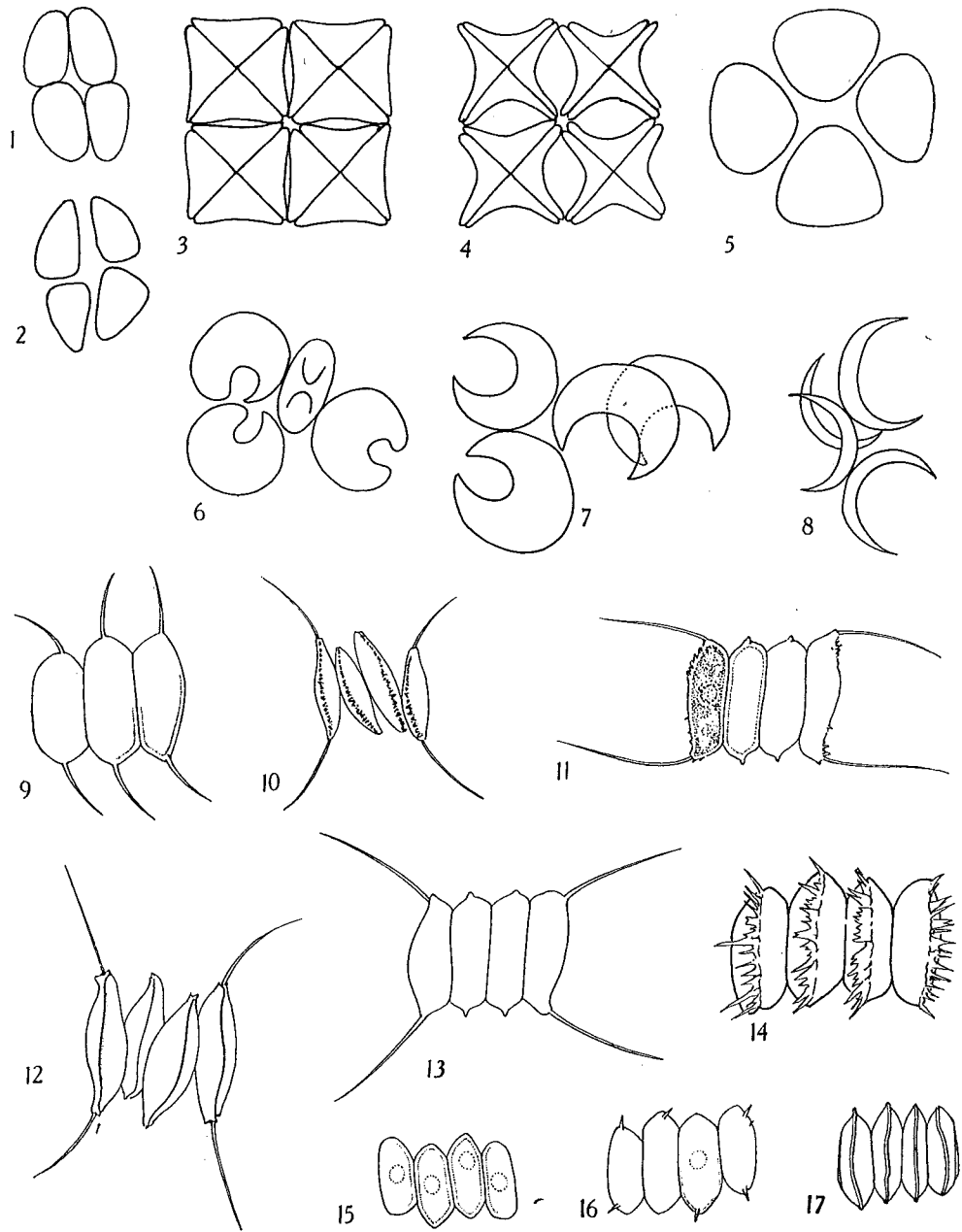


PLANCHE III



EXPLICATION DE LA PLANCHE III

---

- Fig. 1. — *Pediastrum Boryanum* (TURP.) MEN., 130. (× 500).  
Fig. 2. — *Pediastrum Boryanum* var. *divergens* LEMMERMANN, 10 (× 750).  
Fig. 3. — *Pediastrum Boryanum* var. *longicorne* f. *glabra* REINSCH., 140 (× 750).  
Fig. 4 et 5. — *Pediastrum simplex* var. *granulatum* LEMMERMANN, 130 (× 750).  
Fig. 6. — *Pediastrum simplex* var. *granulatum*, 239. Certaines cellules (× 500)  
ont la f. *ovata*, d'autres la f. *typica* (× 500).  
Fig. 7. — *Pediastrum clathratum* var. *duodenarium* LEMMERMANN, 246 (× 500).  
Fig. 8 et 9. — *Pediastrum*, formes anormales (× 500).
-

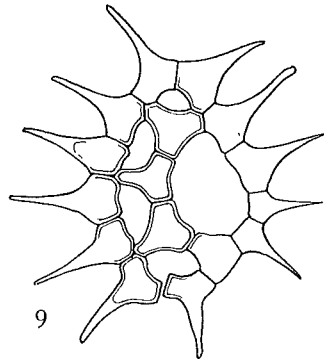
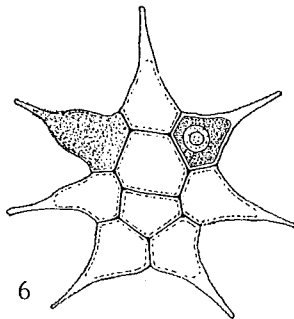
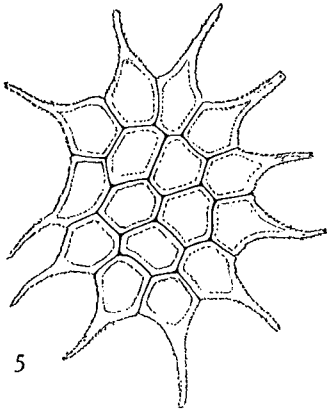
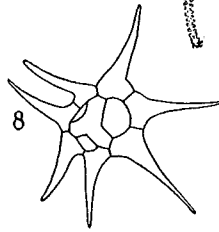
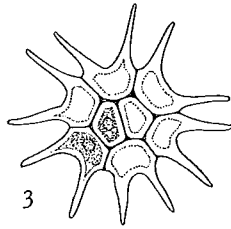
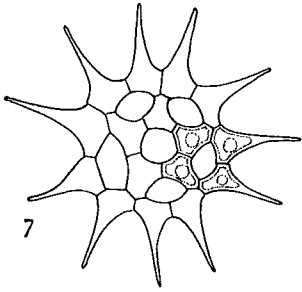
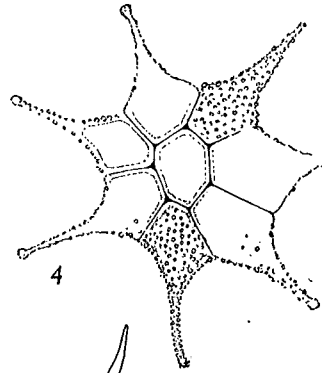
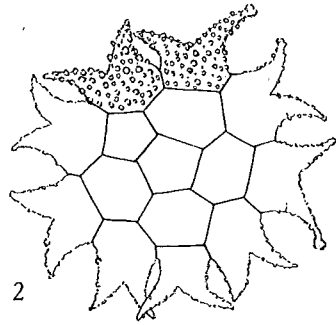
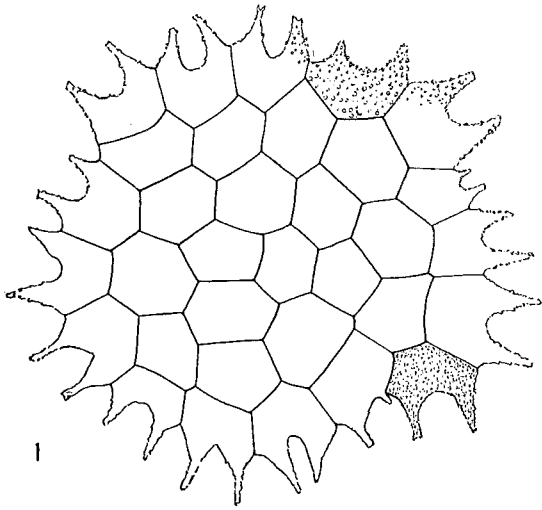


PLANCHE IV

EXPLICATION DE LA PLANCHE IV

---

- Fig. 1. — *Pediastrum duplex* var. *asperum* BRAUN, 238 ( $\times 750$ ).  
Fig. 2. — *Pediastrum duplex* var. *Ugandae* nov ( $\times 750$ ).  
Fig. 3. — *Pediastrum duplex* var. *clathratum* BRAUN, 246 ( $\times 750$ ).
-

