

INSTITUT DES PARCS NATIONAUX DU CONGO ET DU RWANDA

PUBLIÉ AVEC LE CONCOURS DE L'INSTITUT BELGE
POUR L'ENCOURAGEMENT DE LA RECHERCHE SCIENTIFIQUE OUTRE-MER
(I.B.E.R.S.O.M.)

Exploration du Parc National de la Garamba

MISSION H. DE SAEGER

en collaboration avec

P. BAERT, G. DEMOULIN, I. DENISOFF, J. MARTIN, M. MICHA, A. NOIRFALISE,
P. SCHOEMAKER, G. TROUPIN et J. VERSCHUREN (1949-1952).

FASCICULE 30

COPRINAE

(COLEOPTERA LAMELLICORNIA)

Fam. SCARABAEIDAE

BY

MARIA C. FERREIRA (Lourenço Marques)



BRUXELLES

1962

UNION DES ARTS ET METIERS DE BRUXELLES

UNION DES ARTS ET METIERS DE BRUXELLES

Exploration du Parc National de la Grand-Grille

Membre N° 02 54 00 01

ARTISTE

COPYRAME

UNION DES ARTS ET METIERS DE BRUXELLES

112, rue de Louvain, 112, Bruxelles 1



IMPRIMERIE HAYEZ, s.p.r.l.
112, rue de Louvain, 112, Bruxelles 1
Gérant: M. Hayez, av. de l'Horizon, 39
Bruxelles 15

PARC NATIONAL DE LA GARAMBA. — MISSION H. DE SAEGER

en collaboration avec

P. BAERT, G. DEMOULIN, I. DENISOFF, J. MARTIN, M. MICHA, A. NOIRFALISE, P. SCHOEMAKER,
G. TROUPIN et J. VERSCHUREN (1949-1952).

Fascicule 30

COPRINAE
(COLEOPTERA LAMELLICORNIA)
Fam. SCARABAEIDAE

BY

MARIA C. FERREIRA (Lourenço Marques)

INTRODUCTION

The material, on which the present is based, was collected in the Garamba National Park (Old Belgian Congo Territory) (Map III).

This material consists of five tribes of *Scarabaeidae*, viz. : *Scarabaeini*, *Gymnopleurini*, *Canthonini*, *Coprini* and *Onitini*.

The present work is divided into four parts : the first one contains the key to the genera of *Coprinae* present in the Old Belgian Congo Territory; the second one the faunistic concentration of the *Coprinae* in the Old Belgian Congo Territory; the third part the faunistic concentration of the *Coprinae* in the Garamba National Park, and the Scarabaeids collected by the H. DE SAEGER Expedition in this Park; the fourth part contains descriptions of some new species.

I wish to express my sincerest thanks to the President of the « Institut des Parcs Nationaux du Congo et du Ruanda Urundi » and Dr. H. DE SAEGER, who allowed me to study this important material. My thanks, also, go to M. G. FAGEL, entomologist of the above Institute, M. J. VRYDAGH, entomologist of the « Institut royal des Sciences naturelles de Belgique » (Bruxelles), Dr. K. DELKESKAMP, Director of the « Zoologisches Museum, Berlin », Dr. SACHTLEBEN, Director of the « Deutsche Entomologische Institut, Berlin », Dr. KJELLANDER, entomologist of the « Naturhistoriska Riksmuseet, Stockholm », Dr. HERTL, Director of the « Staatliches Museum für Tierkunde, Dresde », Dr. H. J. HESSE, entomologist of the South African Museum, Cape

Town, M. BRITTON, entomologist of the British Museum (Natural History), London, and M. P. BASILEWSKY, entomologist of the « Musée Royal de l'Afrique Centrale, Tervuren », who sent to me, on loan, the various types or material preserved in the mentioned Scientific Institutions.

ABBREVIATIONS.

- G.D. = G. DEMOULIN.
 H.D.S. = H. DE SAEGER.
 J.V. = J. VERSCHUREN.
 C. = Camerun.
 N. = Natal.
 P.N.A. = Parc National Albert.
 P.N.G. = Parc National de la Garamba.
 P.N.U. = Parc National de l'Upemba.
 R.C. = Congo.
 Tg. = Tanganyika.
 B.M. = British Museum (Natural History), London.
 I.P.N.C.B. = Institut des Parcs Nationaux du Congo et du Ruanda-Urundi, Bruxelles.
 I.R.S.N.B. = Institut royal des Sciences naturelles de Belgique, Bruxelles.
 M. Dr. = Staatliches Museum für Tierkunde, Dresde.
 M.K. = M.U.K. — Naturhistorische Museum, Kiel.
 M.P. = Muséum d'Histoire Naturelle de Paris.
 M.R.C.B. = Musée Royal de l'Afrique Centrale, Tervuren.
 M.Tr. = Museum of Tring.
 M.Z.B. = Zoologisches Museum, Berlin.
 N.R.S. = Naturhistoriska Riksmuseet, Stockholm.
 S.A.M. = South African Museum, Cape Town.
 I = Biological Cell I.
 II = Biological Cell II.

The letters following the cell refers to the habitat where the specimens were collected and this may be found on maps I and II, on the horizontal and vertical axes; the numbers following refer to the habitat.

The designations used in chapter III-A are transcribed from the paper by H. DE SAEGER (1956), « Entomologie. Renseignements écobioologiques », *Exploration du Parc National de la Garamba*, (5) : 8-19.

The significance of the designations used to the material, in chapter III-B, may be found in chapter III-A.

The species marked with an * are mentioned for the first time as found in the Congo.

CHAPTER I.

**Key to the genera of Coprinae presented in the Congo
(old Belgian Congo territory)**

1. Intermediate and hind tibiae elongated, not dilated or dilated at apex, but, in this case, dilated from base to apex. Hind femora elongated 2
- Intermediate and hind tibiae short and strongly dilated at apex. Hind femora short 6
2. Median coxae parallel or slightly oblique and far apart from each other. Metasternum very well developed between the median coxae 3
- Median coxae very oblique and close together, sometimes subcontiguous. Metasternum narrow between the median coxae 5
3. Antennae with eight or nine joints. Hind tibiae long, flat, generally curved inwardly and longitudinally carinate. Scutellum invisible or very small 4
- Antennae with eight joints, except in the genus *Afroharoldius* JANSSENS, whose antenna has nine joints. Hind tibiae very short, cylindrical, without longitudinal or strong carinae but dilated from base to apex. Scutellum invisible. Insects mirmecophil or termithophil (*ALLOSCELINI*) 39
4. Body not flat laterally. Antennae with nine joints. Anterior tarsi generally present. Median coxae slightly oblique and separated from lateral carina of the body. Sides of the pronotum regularly curved at base (*CANTHONINI*) Genus *Anachalcos* HOPE.
- Body flat laterally. Antennae with eight or nine joints. Anterior tarsi always present. Median coxae parallel and near the lateral carina of the body. Sides of the pronotum vertical (*SISYPHINI*) Genus *Sisyphus* LATREILLE.
5. Winged species. Anterior tarsi present. Elytra strongly concave laterally, exposing part of the dorsal segments. Median tibiae ending in one or two spurs (*GYMNOPLEURINI*) 9

- Winged or apterous species. Anterior tibiae not present. Elytra non concave laterally. Median tibiae ending in one spur in the winged species (*SCARABAEINI*) 11
6. Second joint of the labia palpi longer than the first one; third joint very short, sometimes very rudimentary or absent. Elytra with eight or nine striae 7
- Second joint of the labial palpi shorter than the first; third joint always distinct. Elytra with eight or nine striae and one or two lateral carinae (*COPRINI*) 14
7. Antennae with eight joints. Pronotum without two basal median impressions. Elytra with eight striae. Anterior tarsi present in both sexes (*ONITICELLINI*) 29
- Antennae with nine joints. Pronotum with or without two median basal impressions. Elytra with eight or nine striae. Anterior tarsi present in both sexes or in the female only 8
8. Scutellum invisible. Pronotum without median basal impressions. Elytra with eight striae. Anterior tibiae with one terminal jointed spur, in both sexes. Anterior tarsi present in both sexes (*ONTHOPHAGINI*) 40
- Scutellum visible but very short. Pronotum generally with two median basal impressions. Elytra with nine striae and a supplementary ridge situated between the eighth and the ninth striae. Anterior tibiae with terminal spur, always fused with tibiae in the male. Anterior tarsi present in the male (*ONITINI*) 35
9. Metasternal epimeron clearly visible in the elytral concavity and forming, at the junction with the first abdominal sternite, a distinct suture, which forms inwardly a strong, transversal carina. Median tibiae ending in one or two spurs 10
- Metasternal epimeron not clearly visible in the elytral concavity fused with the first abdominal sternite, the suture being invisible or only marked by a lateral depression and does not form inwardly a strong carina. Median tibiae ending in one spur
Genus *Gymnopleurus* ILLIGER.
10. Median tibiae ending in two spurs, one of which is fused and very well developed, the other very short and articulate. Clypeus 4-dentate Genus *Garreta* JANSSENS.
- Median tibiae ending in one spur. Clypeus 4- or 6-dentate
Genus *Allogymnopleurus* JANSSENS.
11. Club of the antennae normal. One apical spur on the middle and hind tibiae 12

- Club of the antennae globose, the joints fitting into each other. Two apical spurs in the middle and hind tibiae
Genus *Sceliages* WESTWOOD.
12. Tarsi with two claws 13
— Tarsi with one claw Genus *Kheper* JANSSENS.
13. Anterior femora normal. Claws of the tarsi inserted at the end of the last joint which is straight or rounded ... Genus *Scarabaeus* LINNÉ.
— Anterior femora very strong, occupying nearly the whole prothorax. Claws of the tarsi insert at the oblique carina at the end of the last joint Genus *Pachylomera* KIRBY.
14. Hind tibiae not carinate transversally on the outer margin; outer margins smooth or creno-dentate (*PINOTINA*) 15
— Hind tibiae with a carina or a transverse edge on the outer margin, above the apex (*COPRINA*) 22
15. Mesosternum long and narrow. Abdominal sternites sometimes fused together or at least partially fused. First joint of the median and hind tarsi equal in length to that of the second joint 16
— Mesosternum short and wide. Abdominal sternites not fused. First joint of the median and hind tarsi longer than the second joint ... 17
16. Clypeus 4-dentate. Abdominal sternites with visible suture on a large part of its surface Genus *Paraphytus* HAROLD.
— Clypeus 2-dentate. Abdominal sternites smooth, with the suture absent Genus *Pedaria* CASTELNAU.
17. Antennae with eight joints. Body more or less elongated, with the sides generally parallel 18
— Antennae with nine joints. Body generally short and convex 21
18. First joint of the hind tarsi well developed, in length and width. First joint of the median tarsi wide and longer than all the others combined 19
— First joint of the hind tarsi wider than the second, joints gradually decreasing in length 20
19. First joint of the hind tarsi relatively short but very wide. Hind tibiae widened at apex Genus *Heterochitopus* PÉRINGUEY.
— First joint of the hind tarsi very large, elongated, four times as long and, at least, twice as wide as the second. Hind tibiae widened at apex, but longer than wide Genus *Pinacotarsus* HAROLD.
20. Joints of the tarsi strongly bilobed and incised at apex. Body elongated. Sides of the pronotum parallel Genus *Stiptopodius* HAROLD.

- Joints of the tarsi flat and elongated. Body a little elongated. Sides of the pronotum round Genus *Saproecius* PÉRINGUEY.
21. Clypeus 4-dentate, the median teeth stronger than the lateral. Pronotum not excavated anteriorly. Anterior tibiae not or little serrate outwardly, before the big teeth. Median and hind tibiae widening regularly from the base to the apex ... Genus *Delopleurus* ERICHSON.
- Clypeus deeply incised and divided in two triangular saliences. Pronotum sometimes excavate anteriorly. Anterior tibiae denticulate or serrate outwardly, before or between the big teeth. Median and hind tibiae strongly widened at apex Genus *Coptorhina* HOPE.
22. Prothoracic episternum without transversal carina arising from the procoxal cavity. Eighth stria of the elytra always carinate, totally or partially; seventh stria sometimes carinate 23
- Prothoracic episternum with a transversal carina arising from the procoxal cavity. Seventh and eighth striae of the elytra non carinate 26
23. Apical part of the prosternal apophysis sub-carinate at distal one-third. Apical margin of the pronotum not marginate. Scutellum short, but very distinct between the elytra. Eighth stria carinate, but only at distal one-third. Sixth abdominal sternite wide, the length of the median part equal to the 3rd-5th sternites combined
Genus *Copridaspilus* BOUCOMONT.
- Apical part of the prosternal apophysis carinate. Apical margin of the pronotum marginate. Scutellum not distinct between the elytra. Seventh or eighth stria of the elytra carinate. Sixth abdominal sternite narrow, the length of the median part always smaller than the length of the joints 3-5 combined 24
24. Seventh stria of the elytra carinate. Metasternum anteriorly not curved. Mesosternal epimeron not carinate above. Procoxal cavity not marginate behind. Mentum strongly incised in the middle, forming two lobes ...
Genus *Heliocopris* HOPE.
- Seventh stria of the elytra not carinate; eighth stria of the elytra carinate, or only at the basal two-third or on nearly the extension of its length. Metasternum anteriorly angulose. Mesosternal epimeron carinate above. Procoxal cavity marginate behind. Mentum without two lobes, slightly incised at middle Genus *Catharsius* HOPE. 25
25. Ventral face of the anterior tibiae with three long, oblique and sub-parallel carinae. Large species Subgenus *Catharsius* s. str.
- Ventral face of the anterior tibiae marginate, the margin denticulate, near the outer border of the tibia. Small species
Subgenus *Metacatharsius* PAULIAN.

26. Sixth abdominal sternite well developed; the length of the median part the same size as the length of the joints 2-5 combined 27
 — Sixth abdominal sternite narrow; the length of the median part always very much shorter than the length of the sternites 2-5 combined
 Genus *Copris* GEOFFROY. 28
27. Elytra with 8 striae. Third and fourth outer teeth of the anterior tibiae very close together and these two widely separated from the second outer tooth. Anterior femora and trochanters normal. Body little convex Genus *Pseudopedaria* FELSCHE.
 — Elytra with 9 striae, of which the 9th is incomplete at the basal half. Outer teeth of the anterior tibiae normal and not combined in groups. Anterior femora with an anterior elevated edge, which is separated from the femoral surface by a deep groove. Anterior trochanters with an elevated edge. Body strongly convex
 Genus *Pseudocopris* FERREIRA.
28. Straight anterior tibiae at apical margin, this margin forming, with the inner margin of the tibiae, a right angle. Trochanters of the anterior tibiae nearly always salient. Head without tubercles, horns or carinae in both sexes, slightly gibose in the centre
 Subgenus *Litocopris* WATERHOUSE.
 — Anterior tibiae oblique at apical margin; this margin not forming with the inner margin of the tibiae a right angle. Trochanters normal. Head with tubercles, horns or carinae, more or less developed
 Subgenus *Copris* s. str.
29. Prosternal salience prolonged distally in an apophysis more or less developed between the procoxae. Eighth stria of the elytra not carinate. Hind coxae contiguous Genus *Oniticellus* SERVILLE.
 — Prosternal salience not produced between the procoxae. Eighth stria of the elytra carinate. Hind coxae non contiguous 30
30. Epipleurae of the elytra absent or very narrow. Hind margin of the pronotum not forming an angular and produced lobe, behind the scutellum 31
 — Epipleurae of the elytra very developed, wider than the two outer interstriae of the elytra, at base. Hind margin of the pronotum forming an angular and produced lobe in front the scutellum
 Genus *Drepanoplatynus* BOUCOMONT.
31. Base of the pygidium not carinate. Pubescence simple. Median tibiae transversally carinate. Hind tibiae transversally carinate or not, but in this latter case with long spines, irregularly spaced 32

- Base of the pygidium carinate. Pubescence scale-like. Median and hind tibiae not transversally carinate, but strongly spinous
Genus *Drepanocerus* KIRBY.
32. Metasternum without raised lines forming a carina. First joint of the hind tarsus slightly dilated and a little longer than the other joints combined; second, third, fourth and fifth joints subcylindrical or subtriangular 33
- Metasternum having on the middle of the anterior half two raised lines forming a carina. First joint of the hind tarsus strongly dilated and much longer than the other joints combined; second, third, fourth and fifth joints short and wide Genus *Tragiscus* KLUG.
33. Striae of the elytra geminate. Hind tibiae not transversally carinate, but with long spines, irregularly spaced. Apex of the median and hind tibiae without setigerous hairs very closed together but with very long spines, irregularly spaced along it. Inner and outer margin of the first joint of the median and hind tarsi irregularly spinose; the margins of the other joints without spines or hairs, but the upper margin of each joint irregularly spinose
Genus *Tiniocellus* PÉRINGUEY.
- Striae of the elytra normal, not geminate. Hind tibiae transversally carinate, the carina with setigerous hairs. Apex of the median and hind tibiae with setigerous hairs very closely arranged. Inner and outer margin of the joints of the median and hind tarsi with simple or setigerous hairs 34
34. Body oblong. Lateral margin of the pronotum not sinuose in front of the posterior angles. Base of the pronotum not marginate. Inner margin of the median and hind tibiae pubescent
Genus *Euoniticellus* JANSSENS.
- Body not oblong. Lateral margin of the pronotum sinuose in front of the posterior angles. Base of the pronotum not marginate. Inner margin of the median and hind tibiae pubescent
Genus *Liatongus* REITTER.
35. Length of the median and hind tarsi normal 36
- Median and hind tarsi (especially the median ones) very long
Genus *Gilletellus* JANSSENS.
36. Metasternum plane, surplane or slightly carinate or longitudinally impressed on middle, this impression not limited by elevated carina forming edges 37
- Metasternum with a median longitudinal wide and deep impression, the lateral margins of this impression elevated and forming angular edges Genus *Allonitis* JANSSENS.

37. Prosternum sharp or a little produced behind of the anterior coxae ...
Genus *Onitis* FABRICIUS.
— Prosternum very produced behind the anterior coxae 38
38. Without clypeal carina. Vertex of the females with a tubercle near
the posterior margin Genus *Lophodonitis* JANSSENS.
— With clypeal carina. Vertex of the females with a large ridge dentate
at apex Genus *Heteronitis* GILLET.
39. Antennae with nine joints. Joints of the tarsi fusiform; the basal joint
shorter than the following one Genus *Afroharoldius* JANSSENS.
— Antennae with eight joints. Joints of the tarsi cylindrical and almost
equal Genus *Alloscelus* BOUCOMONT.
40. Apex of the anterior tibiae not truncate, the anterior margin forming
a distinctly concave line or sinuose and generally oblique 41
— Apex of the anterior tibiae truncate, the anterior margin forming along
its whole length a straight line perpendicular to the inner side of the
tibiae, with or without very slight concavity in the upper margin ... 42
41. Head with two anterior transversal carinae, joined by a short longitu-
dinal carina. Genae divided obliquely by a curved and fine carina.
Punctuation of the pronotum always simple
Genus *Milichus* PÉRINGUEY.
— Head without anterior transversal carinae, joined by a short longitudinal
carina. Genae not divided by a carina. Punctuation of the pronotum
simple or not 43
42. Sides of the prosternum with two careniform lines which meet at the
anterior angles Genus *Caccobius* THOMSON.
— Sides of the prosternum with one careniform line directed to the lateral
margin Genus *Caccophilus* JEKEL.
43. Pronotum generally round, or nearly, at base, rarely forming at middle
of the base, a pronounced angle, but in this case the epistoma is 2-dentate
or the elytra are light with black spots
Genus *Onthophagus* LATREILLE.
— Pronotum forming, at middle of the base, a pronounced angle, this
angle forming a beade. Epistoma not 2-dentate; elytra not light with
black spots 44
44. First joint of the labial palpi not dilated. Elytra generally metallic,
rarely brown or black Genus *Proagoderus* LANSBERGE.
— First joint of the labial palpi inwardly dilated with a large triangular
tooth. Elytra brown or black Genus *Diastellopalpus* LANSBERGE.

CHAPTER II.

**The faunistic concentration of the "Coprinae" in the Congo
(old Belgian Congo territory)**Tribe **SCARABAEINI**.Subtribe **SCARABAEINA**.Genus **SCARABAEUS** LINNÉ.

- S. ebenus* (KLUG) var. *sericcipennis* FAIRMAIRE.
R.C. : Sebinga.
- S. gangeticus* (CASTELNAU).
R.C. : P.N.A. (Vitshumbi, Kalinga, Kabare, Kamande, Katanda, Tshambi), Lusambo.
- S. gangeticus* (CASTELNAU) ssp. *profanus* BOHEMAN.
Ruanda : Kibungu.
- S. kwiluensis* JANSSENS.
R.C. : Leverville.
- S. poggei* (WATERHOUSE).
R.C. : Luashi.
- S. sulcipennis* (QUEDENFELDT).
R.C. : Kasai.

Genus **KHEPER** JANSSENS.

- K. festivus* (HAROLD).
R.C. : P.N.U. (Kaswabilenga, Mubale, Mabwe, Kankunda, Kateke river, Ganza [1.860 m], Kamandula, Bowa river, Kilwezi, Kaziba, Munoi, Dipidi, Kabwe, Mukana, Shinkulu, Kimilombo, Lufwa river, Kamamulongo river, gorges de la Pelenge, Kabenga, Kimiala, Lusinga, Lupiala, Kafwe river), Lulua (Kapanga, Tshipaza), Katanga (Kindu), Ubangi (Basobolo).
- K. festivus* (HAROLD) var. *vanderkelleni* (LANSBERGE).
R.C.

K. intermedius (GILLET).

R.C. : P.N.U. (Kalele river, Lusinga, Dipidi river, Mukana, Mubale, Kimilombo, Kapelwa river, Kabwekanono, Kaswabilenga, Kalumengongo, Kankunda, Kafwe, Dipidi, Kamitungulu, Ngozie).

K. lamarcki (M'LEAY).

R.C. : Kwilu, Katanga, Kimwenza, Boma, Lusambo, Bokoro.

K. prodigiosus (ERICHSON).

R.C. : Katanga, Moanda, Boma.

K. pustulosus (GERSTAECKER).

R.C.

K. subaeneus (HAROLD).

R.C. : lac Albert.

K. subaeneus (HAROLD) var. *atratus* GILLET.

R.C. : P.N.G.

Genus **PACHYLOMERA** KIRBY.*P. femoralis* KIRBY.

R.C. : Kivu, Bukavu, Lusambo.

Genus **SCELIAGES** WESTWOOD.*S. augias* GILLET.

R.C. : P.N.U. (Kankunda, Mukana, Kapelwa river).

Tribe **GYMNOPLEURINI**.Genus **GYMNOPLEURUS** ILLIGER.*G. coerulescens* OLIVIER.

R.C. : Kimvula, Uele (Ibembo), Paulis, P.N.G. (Mabanga, mont Embe).

G. colmanti JANSSENS.

R.C. : Sassa.

G. fulgidus OLIVIER.

R.C. : Kisenyi.

G. ignitus KLUG var. *nigrocupreus* JANSSENS.

R.C. : Kwango.

G. jacksoni WATERHOUSE.

R.C. : P.N.U. (Lusinga, Mubale river, Kankunda, Mukana, Kabwekanono, Ngozie, Dipidi river, Kafwe river, Kalumengongo, Kenia, Buye-Bala, Kaswabilenga, Kapelwa river, Mabwe), Gandajika, Kapanga, Kafakumba, Muteba, Mayidi, Kiliba, Mulche, Mukolosimba, Albertville, Bokalakala, Kundelungu.

G. sericeifrons FAIRMAIRE var. *cyaneus* KOLBE.

Ruanda-Urundi : Nduga, Nyamasumu.

G. virens ERICKSON.

R.C. : P.N.U. (Kaswabilenga, Mabwe, Kilwezi, Kiamokoto, Kiwakishi, Kateke), Gandajika, Kapelekese river, Kapanga, Kafakumba, Muteba, Mayidi, Kiliba, Mulche, Maniema, Albertville, Bokalakala (Bolobo).

Genus **GARRETA** JANSSENS.*G. azureus* (FABRICIUS).

R.C. : Kapanga, Kafakumba, Lusambo, Bokuma, Yangambi, Kibaro, Kigwena, Ishambi, Molindi river, Kitumba, P.N.U. (Kankunda, Kaswabilenga, gorges de la Pelenge, Kateke river, Kaziba, Katanda), P.N.A. (May ya Moto, Mabenga, Rwindi, Vitshumbi).

Ruanda-Urundi : Gitarama.

G. azureus (FABRICIUS) ab. *rubrocupreus* JANSSENS.

Ruanda-Urundi : Gitarama, Usumbura.

G. azureus (FABRICIUS) var. *viridimicans* KOLBE.

R.C. : lac Albert, Bokuma, Kapanga, Bosondongo (Ikela), Kisenyi, Nyamurembe.

G. basilewskyi BALTHASAR.

R.C. : Ikela, Bokuma (Tshuapa); Kapanga (Lulua).

G. crenulatus (KOLBE).

R.C. : Uele, lac Albert, Rutshuru, Mabenga.

G. malleolus (KOLBE).

R.C. : Katanga, P.N.U. (Lusinga, Kabwekanono, Dipwa river, Mubale, Mukana, Dipidi river, Kenia, Kafwe river, Manda, Buye Bala, Kapelwa river, Ngozie, Kalumengongo, Kimilombo, Munci, Kamitangulu river, Mabwe, Kaswabilenga, Kundelungu).

Ruanda-Urundi : Nduga, Ndiza, Gitarama.

G. nitens (OLIVIER) var. *coeruleovirens* (KOLBE).

R.C. : P.N.U. (Kaswabilenga, Mabwe), P.N.G.

Genus **ALLOGYMNOPLEURUS** JANSSENS.*A. alluaudi* (GARRETA).

R.C. : P.N.A. (Vitshumbi, Kalinga, Tshambi, Kamande, Katanda, Rwindi), Kundelungu, Shonga.

Ruanda-Urundi : Nduga, Rukoma, Astrida, Kitega.

A. chloris (KLUG).

R.C. : Kapanga, Kafakumba, Albertville.

A. umbrinus (GERSTAECKER).

R.C. : P.N.G.

Tribe SISYPHINI.

Genus **SISYPHUS** LATREILLE.

S. armatus GORY.

Ruanda-Urundi : Rubengera, Ndiza, Rukoma, Gitarama.

S. costatus THUNBERG.

R.C. : Stanleyville, Haut-Uele, P.N.A. (Rutshuru).

S. crispatus GORY.

R.C. : Uele, Kivu, P.N.A. (Vitshumbi, Katanda, Bitale).
Ruanda-Urundi : Gitarama, Rubengera, Nduga, Rukoma.

S. rugosus GORY.

R.C. : P.N.A. (Vitshumbi, Rwindi).

S. seminulum GERSTAECKER.

R.C. : Lomami, Uele, Kivu, P.N.A. (Rwindi), N. Kivu (Keshero), Lulua (Kapanga).

S. spinipes THUNBERG.

R.C. : Costermansville, Luvungi, P.N.A. (Vitshumbi, Katanda, Kanyabayongo, Ninda, Tshamugussa).

Ruanda-Urundi : Shangugu, Rubengera, Rukoma, Ndiza, Nduga, Gitarama.

Tribe ALLOSCELINI.

Genus **ALLOSCELUS** BOUCOMONT.

A. paradoxus BOUCOMONT.

R.C. : Moto.

Genus **AFROHAROLDIUS** JANSSENS.

A. ennearthrus JANSSENS.

R.C. : Élisabethville, Luluabourg.

A. leleupi JANSSENS.

R.C. : Kanzenze.

A. modestus JANSSENS.

R.C. : Kundelungu.

Tribe **CANTHONINI**.Genus **ANACHALCOS** HOPE.*A. aurescens* BATES.

R.C. : Bumbuli, Kasai, Bas-Uele, Haut-Ituri, Congo da Lemba, Tshibalaka, Tshipaza, Kapanga, Kabongo, Mutaka, Kasongo, Boma, Bokoro, Sankuru, Bokalakala (Bolobo), Ibembo, Bas-Itombwe, P.N.G.

A. convexus BOHEMAN.

R.C. : P.N.U. (Mabwe, Kaswabilenga, road Kaswabilenga-Mabwe, Kateke, Kaziba, Kankunda, Mukana), P.N.G.

A. cupreus (FABRICIUS).

R.C. : P.N.A. (Mabenga, May ya Moto, monts Kasali), Kafakumba, Kapanga, Tshipaza, Uvira, Costermansville, Bokuma, Kigwena, Bosodongo, Yangambi, Bikoro, P.N.G.

Ruanda-Urundi : Nyamurembe.

A. procerus GERSTAECKER.

R.C. : P.N.U. (Mabwe, Kaswabilenga, Kateke, gorges de la Pelenge, Kankunda, Kabwe, Mubale, Dipwa river), Kapanga, région des Grands Lacs, Makamba.

Ruanda-Urundi : Nyamurembe, Usumbura, Kibungu.

Tribe **COPRINI**.Subtribe **PINOTINA**.Genus **PEDARIA** CASTELNAU.*P. armata* RAFFRAY.

Ruanda-Urundi : Gitarama, Rukoma.

P. criberima WATERHOUSE.

R.C.

P. intermedia BOUCOMONT.

R.C. : P.N.A. (Vitshumbi).

P. spinosa BOUCOMONT.

Ruanda-Urundi : Rubengera, Gitarama.

P. taylori WATERHOUSE var. *decorsei* BOUCOMONT.

Ruanda-Urundi : Gitarama, Rukoma, Nduga.

P. tuberculigera WATERHOUSE.

Ruanda-Urundi : Rukoma, Nduga.

P. wittei JANSSENS.

R.C. : P.N.A. (Vitshumbi).

Genus **COPTORHINA** HOPE.

- C. auspicata* PÉRINGUEY.
R.C. : Katanga.
- C. davidi* JANSSENS.
R.C. : Katanga (Ankoro), Kundelungu.
- C. nitidipennis* BOHEMAN.
R.C. : Katanga.
- C. optata* PÉRINGUEY.
R.C. : Katanga (Kafakumba).
- C. subaenea* JANSSENS.
R.C. : Élisabethville (Lubumbashi).

Genus **HETEROCLITOPUS** PÉRINGUEY.

- H. burgeoni* BOUCOMONT.
R.C. : Haut-Uele (Moto), Sassa.
- H. collarti* JANSSENS.
R.C. : Faradje.
- H. punctulatus* BOUCOMONT.
R.C. : Haut-Uele (Moto), Mayumbe (Kinanga).

Genus **PINACOTARSUS** HAROLD.

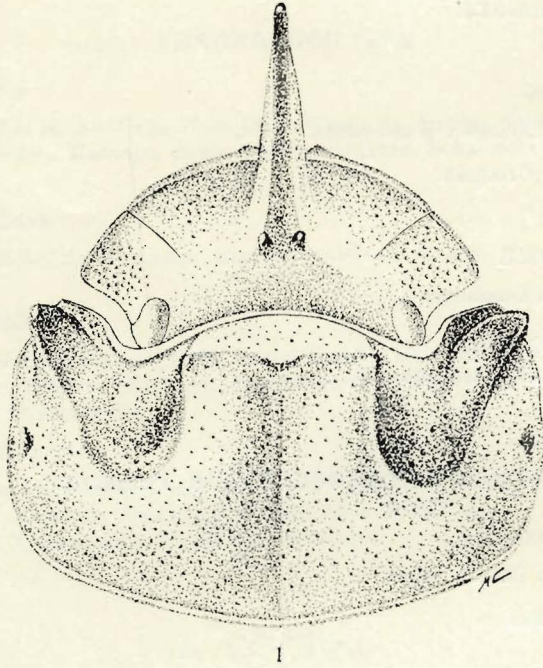
- P. tinantae* BOUCOMONT.
R.C. : Katanga (Élisabethville), Kundelungu.

Genus **STIPTOPODIUS** HAROLD.

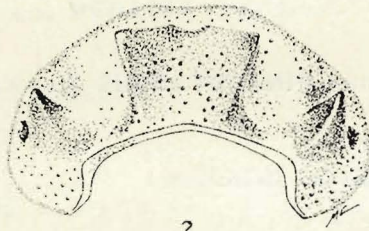
- S. cylindroides* (D'ORBIGNY).
R.C.

Genus **SAPROECIUS** PÉRINGUEY.

- S. hirsutus* BOUCOMONT.
R.C. : Kisantu, Mayumbe (Lolo-Mazinga).



1



2

FIGS. 1-2. — *Copris amabile* FERREIRA.
1 : Head and pronotum (type ♂), dorsal view.
2 : Pronotum (type ♂), anterior view.

Genus **DELOPLEURUS** ERICHSON.

D. gilleti JANSSENS.

R.C. : Kasai (Luebo forest), Katanga (Lulua), Kapelekese river.

Genus **PARAPHYTUS** HAROLD.

P. ritsemae (HAROLD).

R.C. : Kindu, Vieux Kasongo.

Subtribe **COPRINA**.Genus **COPRIS** GEOFFROY.Subgenus **COPRIS** s. str.

C. amabile FERREIRA (Figs. 1, 2).

R.C. : Ruwenzori.

C. arcturus GILLET.

R.C. : Bambesa, Buta.

C. armiger GILLET (Figs. 24, 25).

R.C. : Kapanga, Lomami, Mutaka, Léopoldville, Élisabethville, P.N.U. (Kaswabilenga, Kateke, Kaziba, Mukana), P.N.G.

* *C. basilewskyi* n. sp. (Figs. 45, 46).

R.C. : Stanleyville.

C. bovinus GILLET (Figs. 3, 4).

R.C. : Léopoldville.

C. carmelita FABRICIUS (Fig. 26).

R.C. : Bambesa, Luma, P.N.G.

C. dracunculus FERREIRA.

R.C. : P.N.U. (Mabwe, Kanonga, Kafwe, Dipidi river, Buye Bala, Katongo, Lusinga, Mukana, Kabwekanono, Kalumengongo, Kundelungu), P.N.G.

C. elphenor KLUG.

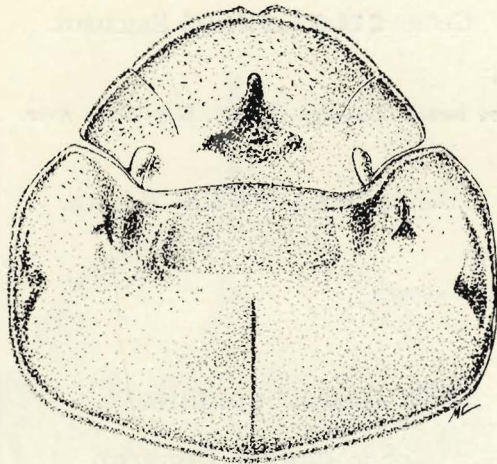
R.C. : P.N.U. (Mabwe, Kaswabilenga, Kateke, Léopoldville, Lusinga, Mukana, Kabwekanono).

* *C. gazellarum* GILLET.

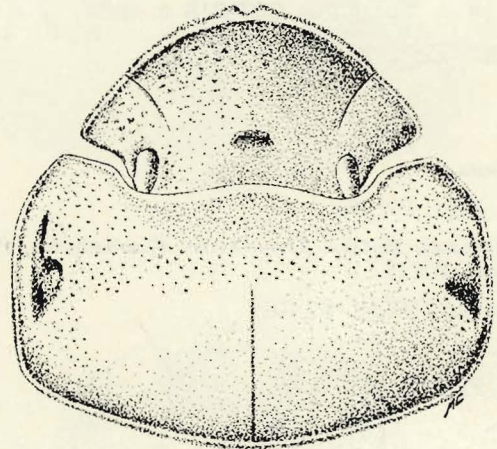
R.C. : P.N.G.

C. inhalatus QUEDENFELDT.

R.C. : Kalani river, Kapanga (Lulua), Luiza river (Katanga), Ngila (Sankuru), Ubungwe, Mubanga, Shamba (Kasai), Kwango (Popokabaka).



3



4

FIGS. 3-4. — *Copris bovinus* GILLET.

Head and pronotum, dorsal view.

1 : Type ♂. — 2 : Type ♀.

C. insidiosus PÉRINGUEY (Fig. 5).

R.C. : Mitwaba (Manono), Kundelungu (Katanga), Lubudi (Lualaba), Lomami (Mwene-Ditu), P.N.U. (Mabwe, Kaswabilenga, Kanonga, Lusinga, Kateke, Lufwa river, Dipidi, Buye Bala, Kamituno, Mukana, Kalumengongo).

Ruanda-Urundi : Gabiro, Bururi, Gitarama, Rukoma, Nduga, Ndiza, Kibungu.

C. integer REICHE.

R.C. : Bukavu, Kanyinya.

Ruanda-Urundi : Kibungu, Tshuruyaga, Gitarama, Rukoma, Nduga, Gatsibu, Kigali.

C. interioris KOLBE (Fig. 27).

R.C. : Bunia, Arara-Aru, Aru, Kanyinya, Bambesa, P.N.G.

* *Copris jucundus* GILLET (Figs. 28, 29).

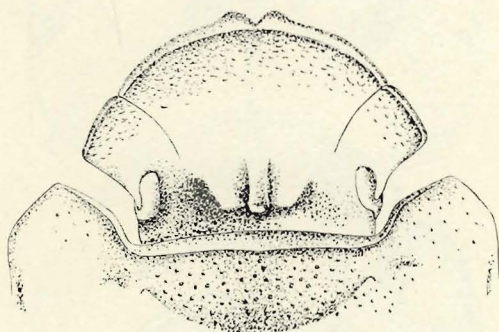
R.C. : P.N.G.

C. laius HAROLD.

R.C. : Bodokuda-Konhovongué.

C. laioides BOUCOMONT.

R.C. : Élisabethville, Mwene-Ditu, Lomami, Katanga.



5

FIG. 5. — *Copris insidiosus* PÉRINGUEY.
Head and pronotum (type ♂).

* *C. megaceratoides* WATERHOUSE.

R.C. : P.N.G.

C. mesacanthus HAROLD.

R.C. : P.N.U. (Kaswabilenga, gorges de la Pelenge, Kanonga, Kankunda, Dipwa river, Mubale, Lusinga, Mukana), P.N.G.

C. mesacanthus HAROLD var. *coriarius* GILLET.

R.C. : Kafakumba, Mahagi, P.N.G.

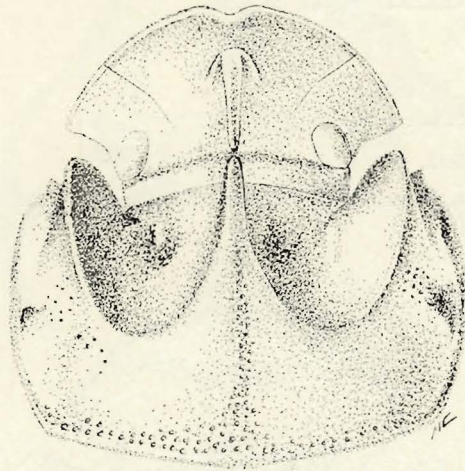
C. misellus PÉRINGUEY.

R.C. : P.N.U. (Kaswabilenga, Kanonga, gorges de la Pelenge, Kankunda, Dipwa river, Mubale, Lusinga, Mukana).

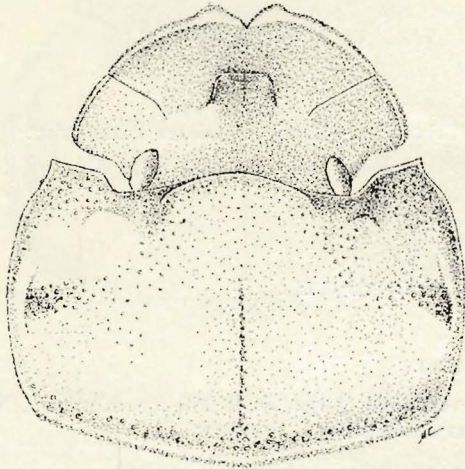
C. moffartsi GILLET (Figs. 30, 31).

R.C. : Kisantu, Akini (Aru), Levi, Bambesa, Demu (Kibali-Ituri), Tukpwo (Uele), Rutshuru, P.N.G.

Ruanda-Urundi : Nduga, Usumbura, Tshuruyaga, Gitarama, Rukoma, Kibungu, Kitega.

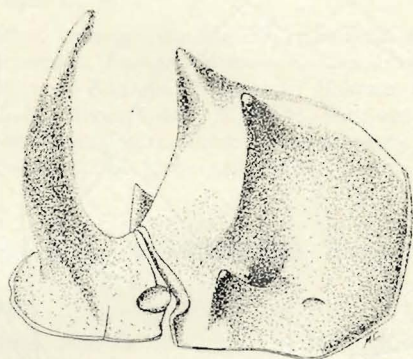


6

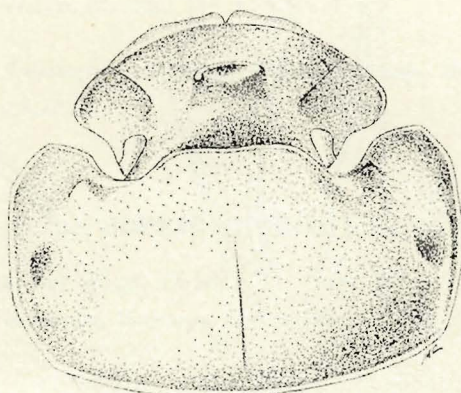


7

FIGS. 6-7. — *Copris tridens* FELSCHÉ.
Head and pronotum, dorsal view.
6 : Type ♂. — 7 : Type ♀.



8



9

FIGS. 8-9. — *Copris wiesei* KOLBE.

Head and pronotum.

8 : Type ♂, lateral view. — 9 : Type ♀, dorsal view.

C. nepos GILLET.

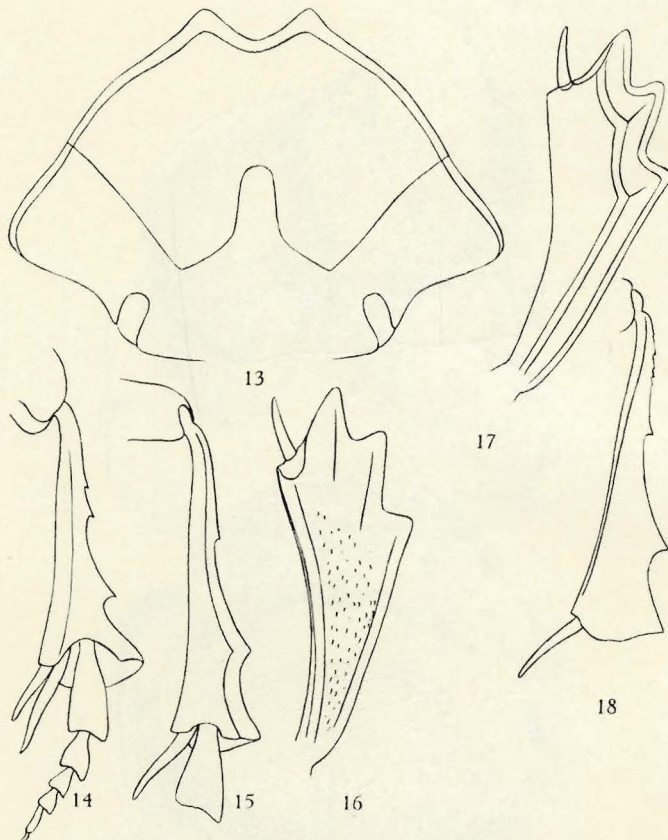
R.C. : P.N.A. (Kalinga, Kamande-Kanyazi, Burunga-lake Mokoto, Kamatembe, Binza-N.E. Rutshuru, Munagana, Muhavura-Burambi, Kanyabayongo, Kibga-S. Vishoke, Bweza, Tshamugussa), Nioka, Kilo-Mines, Bunia (Ituri), Nyakasiba, Logo, Bukavu, Mulungu, Blukwa, Élisabethville.

Ruanda-Urundi : Bururi, Nduga, Ndiza, Astrida, Gitarama, Rukoma, Ninda.

C. orion KLUG.

R.C. : Luluabourg, Albertville, Butiaba, Lulua, Manzadi, Levi, Bukavu, Bambesa, Kaniama, Sandoa, Kafakumba, Bunia, Lomami, Rwankwi, P.N.G.

Ruanda-Urundi : Gitarama, Rukoma, Kitega, Nioka, Bukoma.



FIGS. 13-18. — *Copridaspidus peregrinus* (HAROLD).
 13 : Head and pronotum (type ♂). — 14 : Intermediate tibia and tarsus.
 15, 18 : Posterior tibia. — 16, 17 : Anterior tibia.

C. orphanus GUÉRIN (Figs. 32, 33).

R.C. : Tshibinda, Élisabethville, Bukavu, P.N.A. (Kisenyi, Kalinga, Vitshumbi, Burunga, Munagana, Burambi, Ninda, May ya Moto, Kanyabayongo, Katanda, Rutshuru, Nyiragongo, Mushumangabo, Tshamugussa), P.N.G.

Ruanda-Urundi : Gitarama, Dendezi, Rubengera, Tshuruyaga, Rukoma, Ndiza, Kibungu, Astrida, Kisenyi, Kitega, Nioka, Arara, Ngowa, Keshero (Goma).

C. overlaeti BALTHASAR.

R.C. : Muteba, Kapanga (Lulua).

C. phylax GILLET.

R.C. : Sassa, Bambesa.

C. tridens FELSCHÉ (Figs. 6, 7).

R.C. : Bambesa, N. lake Kivu (Rwankwi).

C. wiesei KOLBE (Figs. 8, 9).

R.C. : P.N.A. (Kalinga, Burunga-lake Mokoto, Kamatembe, Nyarusambo-Mikeno, Bitashimwa-mont Sesero, Munagana, Burambi-Muhavura, Kundhuru ya Tshuve, Ninda, Binza-N.E. Rutshuru, Kanyabayongo-Kabasha, Ruhengeri, Mabenga-mont Kasale, lake N'Gando, Kibga, Nyabirehe-Karisimbi, Mudende-lake N'Gando, Mugongo-lake N'Gando, Bugeshi-lake N'Gando, Mayumbu forest-Nyamuragira, Binza, Tshamugussa), Rwankwi.

Ruanda-Urundi : contrefort Est Muhavura, Ndiza, Kinazi.

Subgenus **LITOCOPRIS** WATERHOUSE.

L. muticus BOHEMAN.

R.C. : P.N.U. (Mabwe, Molindi river, May ya Moto, Katanda, Binga, Kaswabilenga, Kanonga, Lukawe, Mateke, Kaziba, Lusinga, Mukana), Bambesa, Léopoldville, Butiaba, Kanyinya, P.N.G.

Ruanda-Urundi : Kibungu, Kitega.

L. punctiventris WATERHOUSE.

R.C. : P.N.G.

Ruanda-Urundi : Tshuruyaga, Gitarama, Rukoma, Nduga, Ndiza, Usumbura.

L. ruandanus BALTHASAR.

Ruanda : Astrida.

Genus **COPRIDASPIDUS** BOUCOMONT.

C. peregrinus (HAROLD) (Figs. 13-18).

R.C. : Mutaka, Tshibamba, Kapanga, Mwene-Ditu.

Genus **PSEUDOCOPRIS** FERREIRA.

P. tubericollis (FELSCHÉ).

R.C. : Kaniama, Tshibalaka, Kapanga, P.N.U. (Buye-Bala, Dipidi, Mukelengia, Lusinga, Kapelwa, Kamitunu, Mukana, Kalumengongo).

Genus **PSEUDOPEDARIA** FELSCHÉ.

P. grossa (THOMSON).

R.C. : Kambowe.

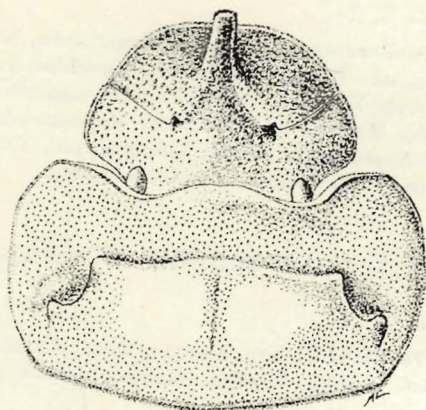
Genus **CATHARSIUS** HOPE.

C. achates OLIVIER (Figs. 10, 11).

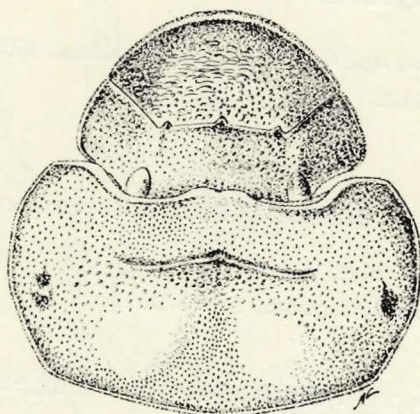
R.C. : Kibali-Ituri (Aru).

* *C. alphaeus* GILLET.

R.C. : P.N.U., Kapanga.



10



11

FIGS. 10-11. — *Catharsius achates* OLIVIER.

Head and pronotum, dorsal view.

10 : Type ♂. — 11 : Type ♀.

C. approximans KOLBE.

R.C. : Mukenge.

C. balubanus KOLBE.

R.C. : Balubaland.

C. biconifer FELSCH (Fig. 12).

R.C. : Kapanga, Lodja, Sankisia.

C. bicornutus KOLBE.

R.C.

* *C. brevicornis* FELSCHE (Fig. 34).

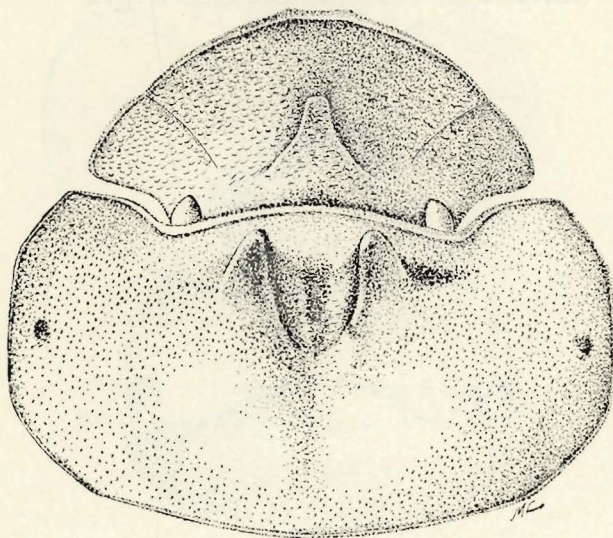
R.C. : P.N.G.

C. cassius KOLBE.

R.C. : Banana.

C. duciformis FERREIRA.

R.C. : P.N.U. (Kaziba, gorges de la Pelenge, Mubale, Munoi a Lupiala).



12

FIG. 12. — *Catharsius biconifer* FELSCHE.
Head and pronotum (type ♂), dorsal view.

C. dux HAROLD (Fig. 35).

R.C. : Mwene-Ditu, Mayidi, Kapanga, Tshibamba, Muteba, Kafakumba, Tshibalaka, Isangi, Arara-Aru, Nioka, Yangambi, Bokoro, Lemfu, Luebo-Kamina, Kisantu, Tshibala, Djeka, Luebo, Katoka-Luluabourg, Lualaba-Kabongo, Bokuma, Lokandu, Port-Francqui, Ekoli, Kunungu, Mpese, Bosekele, Bokungu, Bambesa, Lusambo, Kinguingi, rég. Lisala, Mukila, Uele, Kingungi, Stanleyville, Matadi, Léopoldville, Moanda, Boende, Flandria, Lubudi, Eala, Katoka, Luma (Djalasiga), Kabwe, Tumba, Baudoinville, Luashi, Kinda, P.N.G.

C. eteocles CASTELNAU.

R.C. : P.N.G.

* *C. garambae* n. sp. (Fig. 51).

R.C. : P.N.G.

C. gorilla THOMSON.

R.C. : Lundu, Ekoti, Banana, Kapanga, Bokungu, Nioka, Bokuma, Luma.

C. gorilloides FELSCHE (Fig. 19).

R.C. : Stanley pool.

C. neptunus KOLBE.

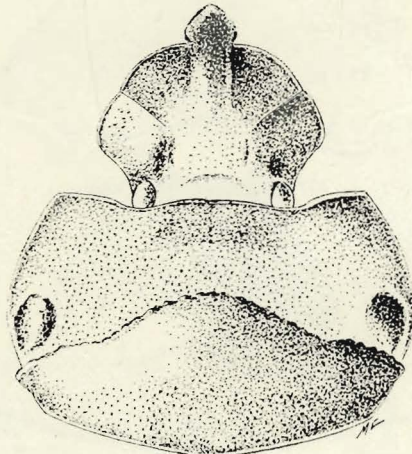
R.C. : P.N.A. (Kalinga, Tshambi, Binza, Ndeko).
Ruanda-Urundi.

C. ninus GILLET (Figs. 36, 37).

R.C. : Stanley pool, Stanleyville, P.N.G.

C. pundion HAROLD (Fig. 20).

R.C. : P.N.U. (Kaswabilenga, Kateke, Kankunda), Kafakumba.



19

FIG. 19. — *Catharsius gorilloides* FELSCHÉ.
Head and pronotum (type ♂), dorsal view.

C. phidias OLIVIER (Fig. 40).

R.C. : P.N.U. (Mabwe, Kanonga, Kilwezi, Kankunda, Kimiala, Sampwe, Kenia, Ngozie, Dipidi river, Lusinga, Kafwe, Katongo, Buye-Bala, Kapelwa, Mukana, Kabwekanono, Kalumengongo), Kundelungu, P.N.G.

C. platycerus KLUG (Figs. 38, 39).

R.C. : Rutshuru, mont Kasali, Katanda, Bambesa, Stanley pool, Katoka, P.N.G.

C. platynotus FELSCHÉ.

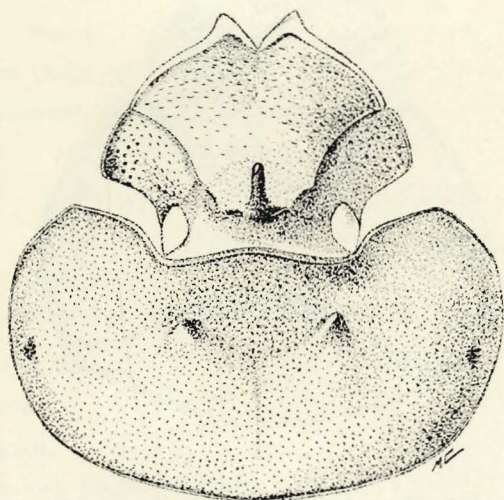
R.C. : P.N.U. (Mabwe, Kaswabilenga, Mukana), Ibembo, Bambesa.

* *C. polynices* KOLBE (Figs. 41, 42).

R.C. : P.N.G.

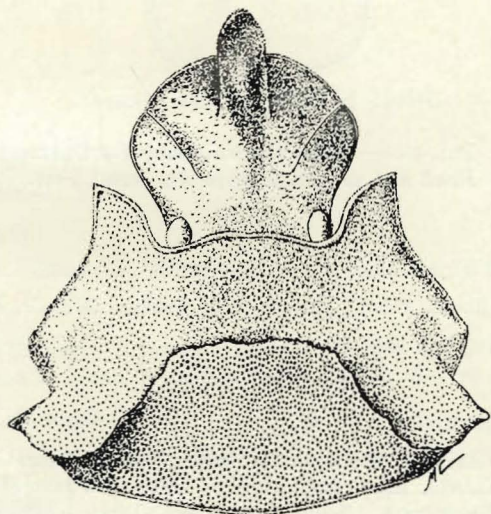
C. rhinocerus KLUG (Fig. 21).

R.C.



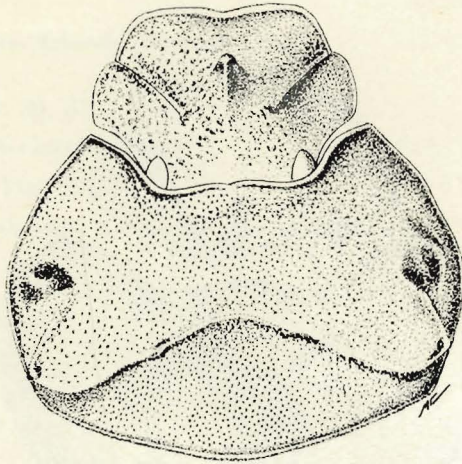
20

FIG. 20. — *Catharsius pandion* HAROLD.
Head and pronotum (type ♂), dorsal view.



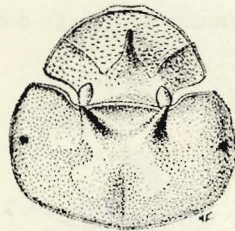
21

FIG. 21. — *Catharsius rhinoceros* KLUG.
Head and pronotum (type ♂), dorsal view.



22

FIG. 22. — *Catharsius spectabilis* GILLET.
Head and pronotum (type ♂), dorsal view.



23

FIG. 23. — *Catharsius tricornutus* DE GEER.
Head and pronotum (type ♂), dorsal view.

C. satyrus KOLBE.

R.C. : Kapanga, Lubudi, P.N.U. (gorges de la Pelenge, Mubale, Kabwe river).

* *C. saegeri* n. sp. (Fig. 52).

R.C. : P.N.G.

C. sesostris WATERHOUSE.

R.C. : P.N.A. (Bitashimwa, Munagana, Kalinga, Ninda, Burambi, Gahinga, Mayumbu forest, Kaswabilenga, Kateke, Kankunda, Lusinga, Mukana, Vitshumbi, Katanda, Tshambi, Kasenyi, Burunga, Tshamugussa), Tshibamba, Mwene-Ditu, Kapanga, Lusambo, Lemfu, Kahinda, Kafakumba, Katoka-Luluabourg, Lukolela, Mayidi, Sandoa, Léopoldville, Flandria, Bokuma, Congo da Lemba, Rwankwi, Bokuma, Bambesa, Léopoldville, Élisabethville, Kasenyi, Kamande, Rwindi, Bunia.

Ruanda-Urundi : Astrida.

- C. spectabilis* GILLET (Fig. 22).
 R.C. : Luashi.
 Ruanda-Urundi : Bururi.
- C. tricornutus* DE GEER (Fig. 23).
 R.C. : P.N.U. (Mabwe), P.N.G.
- * *C. upembanus* n. sp. (Figs. 53, 54).
 R.C. : P.N.U.

Subgenus **METACATHARIUS** PAULIAN.

- M. basilewskyi* BALTHASAR.
 R.C. : Élisabethville.
- M. kindiai* PAULIAN.
 R.C. : Lundi (Lulua), Kindia (Katanga).
- M. peleus* OLIVIER (Fig. 43).
 R.C. : P.N.G., P.N.U. (Mabwe).
- * *M. useramus* KOLBE (Fig. 44).
 R.C. : P.N.G.
- M. tchadensis* BALTHASAR.
 R.C. : N'Gouri (Tchad).

Genus **HELIOCOPRIS** HOPE.

- H. andersoni* BATES.
 R.C. : Musha (Kigali), P.N.G.
- H. antenor* (OLIVIER).
 R.C. : P.N.G., Coquilhatville, Kibali-Ituri, Costermansville, Sassa, Katompe.
- H. colossus* BATES.
 R.C. : Kapona (Katanga), Kapanga (Lulua), Uele, P.N.A. (Tshambi, Vitshumbi, monts Kasali, Kalinga, Katanda, Binza, Mabenga, Ndeko, Ninda, May ya Moto, Mudende), P.N.G.
- H. corniculatus* JANSSENS.
 R.C. : Kapanga (Lulua), Sandoa, Kafakumba, Lomami (Kamina).
- H. dolossus* JANSSENS.
 R.C.
- H. eryx* (FABRICIUS).
 R.C. : Kapanga (Lulua).

H. felschei KOLBE.

R.C. : Bukavu (Kivu), Katana.
Ruanda-Urundi : Gitarama, Bururi.

H. hamadryas (FABRICIUS).

R.C. : Mpala, Bukavu (Kivu), Mutaka (Katanga), Nioka (Kibali-Ituri), Tshipasa (Lulua), Watsa, Tshambi, Kibga, Kalinga, Mudende.
Ruanda-Urundi : Zaza, Gitarama.

H. hamifer HAROLD.

R.C. : Kabongo (Lulua).

H. haroldi KOLBE.

R.C. : Katakokombe (Sankuru), Kasongo (Maniema), Tshipasa, Kapanga (Lulua), Kafakumba, Bokuma, Eala (Équateur), Nioka (Kibali-Ituri), P.N.A. (Tshambi, Binza, Tshanzerwa).

H. japetus KLUG.

R.C. : Kapanga (Lulua), Djeka (Kasai), Tshipasa (Lulua), P.N.G.
Ruanda-Urundi : Kigali, Gitarama.

H. mimus JANSSENS.

R.C. : Kwango (Kikwit), Kanidowaco (Kivu).

H. minos GILLET.

R.C. : Luishia (Lualaba), Kisantu.

H. mutabilis KOLBE.

R.C. : Stanleyville, Banalia, Élisabethville.

H. myrmidon KOLBE.

R.C. : P.N.G.
Ruanda-Urundi : Gitarama, Rukoma, Nduga.

H. neptunoides JANSSENS.

R.C. : Moto, Watsa, Uele, Van Kerkhovenville.

H. pauliani JANSSENS.

R.C. : Luashi (Lulua).

H. quinqueangulatus JANSSENS.

R.C. : Lutunguru (Ituri), Moto (Uele).

H. samson HAROLD.

R.C. : Luhi, Lenze, Buta, Kafakumba, Sandoa, P.N.G.

H. staudingeri KOLBE.

R.C. : Mutaka (Katanda), Élisabethville, P.N.G.

H. sylvanus GILLET.

Ruanda-Urundi : Tshuruyaga.

Tribe **ONITICELLINI**.Subtribe **ONITICELLINA**.Genus **ONITICELLUS** SERVILLE.*O. egregius* KLUG.

R.C. : Kasenyi, Kawa forest.

O. pictus (HAUSMAN).

Ruanda-Urundi : Gitarama, Rukoma.

O. planatus CASTELNAU.

R.C. : Mulungu, lac Vert (Kivu), Kapanga (Lulua), Mutwanya (Stanleyville), Rwankwi (lac Kivu), Nyangwe, Ituri, Mayumbe, P.N.A. (Vitshumbi, Katanda, Tshambi, Kamande, Kalinga, Molindi river, Gahinga, Ninda, Binza, Rwindi, Kanyabayongo, Kibga, Tshamugussa), P.N.U. (Mabwe, Kaswabilenga, Lufira river, Kateke river, Mukana, Kaziba, Kilwezi, Ganza, Lukola river, Lusinga).

Ruanda-Urundi : Gitarama, Kisenyi, Ruhengeri, Rukoma, Nduga, Tshuruyaga, Usumbura, Bururi.

Genus **EUONITICELLUS** JANSSENS.*E. fumigatus* (BOUCOMONT).

R.C. : Mongende, Abimva, Kapanga, Kawa forest, Kaniama, Bambesa, P.N.A. (Kamatembe), P.N.U. (Kaswabilenga, Mabwe).

E. intermedius (REICHE).

R.C. : Kapanga (Lulua), Mpala (Tanganyika), Kavumu to Kabunga (Kivu), Mulungu-Tshibinda, Baudouinville, Albertville, Stanleyville, Ituri, P.N.A. (Vitshumbi, Kanyabayongo).

Ruanda-Urundi : Gitarama, Rukoma, Nduga, Kinazi.

E. kawanus (JANSSENS).

R.C. : Kawa forest, Butiaba, Kasenyi, Nioka, P.N.U. (Kaswabilenga, Mabwe, Kateke).

E. nasicornis (REICHE).

R.C. : Kapanga, Mutwanga (Ruwenzori), P.N.U. (Mabwe, Kaswabilenga, Kaziba, Lusinga, Mukana), Kisantu.

Ruanda-Urundi : Astrida, Shangugu, Rubengera, Gitarama, Rukoma, Ndiza, Nduga.

E. parvus (KRAATZ).

R.C. : Faradje, Uvira.

E. tibatensis (KOLBE).

R.C. : Kapanga (Lulua), Stanleyville, Yebo Moto, Bambesa, Itimbiri, Lulua river, Kalani river, Kapanga, Kaniama, P.N.A. (Vitshumbi), P.N.U. (Kaswabilenga).

E. triangulatus (HAROLD).

R.C. : P.N.A. (Vitshumbi), P.N.U. (Mabwe).
Ruanda-Urundi : Gitarama, Rukoma, Nduga.

E. wittei (JANSSENS).

R.C. : Basoko, Burunga.

Genus **TINIOCELLUS** PÉRINGUEY.*T. collarti* (JANSSENS).

R.C. : P.N.U. (Ganza, Lukoka river), Kawa forest.

T. panthera (BOUCOMONT).

R.C. : Moero.

T. spinipes (ROTH).

R.C. : Kapanga (Lulua), Kamuena to Kabunga (Kivu), Mingazi, Butiaba, P.N.A. (Vitshumbi, Katanda, Tshambi, Kamande, Molindi river, Rutshuru, Rwindi), P.N.U. (Mabwe, Kaswabilenga, Kankunda, Mubale, Lupiala, Kibwezi, Kiamokoto-Kiwakishi).
Ruanda-Urundi : Nduga.

Genus **LIATONGUS** REITTER.*L. arrowi* (BOUCOMONT).

R.C. : Rwankwi (N. lake Kivu), Kabare, Itombwe, P.N.A. (Bitashimwa, mont Sesero, Burambi, Ninda, Gahinga, Katanda, Kibga, Kihorwe, Tshamugussa, Karisimbi), Tshibinda, Mulungu, Rwenkeri, Nioka, lake Bulero, Kaubu.
Ruanda-Urundi : Rubengera, Ruhengeri, Gitarama, Rukoma, Nduga, Biumba.

L. aterrimus (BOUCOMONT).

R.C. : Kiteza, Jadotville.

L. fulvostrigatus D'ORBIGNY.

R.C. : Kitwabalezi, Mayidi.
Ruanda-Urundi : Kaniama, Rubengera, Gitarama, Nduga, Ndiza.

L. interruptus (QUEDENFELDT).

R.C. : Kapanga (Lulua), Tshipasa, Mulungu (Tshibinda), Luluabourg, Kishinde, Kipanga, Kabwe, Kisantu, Baraka, Nyangwe, Kaniama, Likandu, Mulungu.

L. militaris (CASTELNAU).

R.C. : P.N.A. (Vitshumbi, Katanda, Tshambi, Kamande, Molindi river, Nianda, Rwindi).
Ruanda-Urundi : Gitarama, Rukoma, Nduga, Shangugu.

L. schoutedeni (BOUCOMONT).

R.C. : P.N.A. (lake Mokoto, Kibati, Burunga, Kikeri, Kamatembe, Nyarusambo, mont Sesero, Bitashimwa, Tshamugussa, Kibga, Nyabirehe, N'Gando lake, mont Tamira, Nyamuragira, Mubiliba forest, Nyasheke forest, lake Bulero, Ninda), Kasai (Kaubu).
Ruanda-Urundi : Astrida, Gitarama.

L. sjostedti (FELSCHE).

R.C. : Moto, Watsa to Niangara, Bambesa, Tukwo, Yangambi.

L. spathulatus (ROTH).

R.C. : Katana.

Ruanda-Urundi : Astrida, Gitarama, Gabiru, Kitega, Rubengera, Rukoma, Nduga.

L. taurus (BOUCOMONT).

R.C. : Kapanga, Tshipasa, Kafakumba, Kapanga, Kindu, Bambesa, Kaniama, Mwene-Ditu.

L. testudo (LANSBERGE).

R.C. : Kaniama, Kapanga (Lulua), Ditanto (Katanga).

L. upembanus JANSSENS.

R.C. : P.N.U. (Lusinga, Mukana, Kabwekanono, Kamitunu river, Kamitungulu river, Katombwe-Mukana, Dipidi river, Lusinga, Kapelwa river, Kampadika river, Dipwa river, Manda river, Kalumengongo, Mabwe, Kaswabilenga, Ngozie).

Genus **DREPANOPLATYNUS** BOUCOMONT.*D. gilleti* BOUCOMONT.

R.C. : Urwald, Mawambi.

Genus **TRAGISCUS** KLUG.*T. dimidiatus* KLUG.

R.C. : Ituri, Kasenyi, P.N.A. (Vitshumbi, Kamande, Katanda, Rutshuru).

Subtribe **DREPANOCERINA**.Genus **DREPANOCERUS** KIRBY.*D. abyssinicus* ROTH.

R.C. : Keshero (Goma), Ibanda, Uvira, Nioka, Bambesa.

Ruanda-Urundi : Rukoma, Rubengera, Nyabikenke, Gitarama.

D. ambiguus KIRBY.

R.C. : Baudouinville, P.N.A. (Kabasha).

D. bechynei JANSSENS.

R.C. : Uvira.

D. distinctus JANSSENS.

R.C. : Urundi, Kitega, Uele, Libenge, Bambesa, Abimva, Haut-Uele, Yebo-Moto, Dika, Kibali-Ituri, Nioka, Bunia, Kasenyi, Moliro, Elisabethville, P.N.A. (Kanyabayongo-Kabasha).

Ruanda-Urundi : Gitarama, Rukoma.

D. fastiditus PÉRINGUEY.

R.C. : P.N.A. (Vitshumbi).

D. kirbyi KIRBY.

Ruanda-Urundi : Astrida, Gabiru, Gatsibu, Nioka, Katana, Abimva, Gitarama, Rubengera, Nduga, Rukoma.

D. marshalli BOUCOMONT.

R.C. : P.N.U. (Kaswabilenga, Kiamokoto-Kiwakishi).

Ruanda-Urundi : Gatsibu, Gabiro, Rukoma.

D. parallelus RAFFRAY.

R.C. : Uvira, P.N.A. (Rwinda, Molindi river).

Ruanda-Urundi : Gitarama.

D. sulcicollis (CASTELNAU).

R.C. : Baudouinville, Boma, Libenge, Kibombo, Katana.

Ruanda-Urundi : Rukoma, Gitarama.

Tribe ONITINI.

Genus **ALLONITIS** JANSSENS.*A. nasutus* (FELSCHÉ).

R.C. : Watsa to Niangara, Kafakumba, Bopoto, P.N.A. (Tshambi).

Genus **CHIRONITIS** LANSBERGE.*C. asbenicus* GILLET.

R.C. : Tchad.

Genus **GILLETELLUS** JANSSENS.*G. collarti* JANSSENS.

R.C. : P.N.U. (Lusinga, Mukana, Dipidi river, Kafwe river).

Genus **HETERONITIS** GILLET.*H. castelnaui* (HAROLD).

R.C. : Pweto, P.N.A. (Vitshumbi, Tshambi, Kanyazi, Kalinga, Ninda, Ndeko, Katanda), P.N.U. (Mukana, Kaswabilenga, Mabwe).

Genus **LOPHODONITIS** JANSSENS*L. carinatus* (FELSCHÉ).

R.C. : Hant-Uele (Moto).

Genus **ONITIS** FABRICIUS.*O. adelphus* KOLBE.

R.C. : P.N.A. (Kibati, Burunga, Kamatembe, Nyarusambo, Binza, Bitashimwa, Munagana, Burambi, Kundhuru ya Tshuve, Ninda, Rushayo, Tshumba, contrefort est du Muhavura, Kanyabayongo, Katanda, Rutshuru, N'Gando Lake, Kibga, Nyabirehe, Kiniha, Mudende, Mugongo, Tamira, Bonde, Bugeshi, Kibumba, Mayumbu forest, Bweza, Tshamugussa).

O. aeneomicans GILLET.

Ruanda-Urundi : Gitarama, Rukoma, Nduga.

O. aeneus LANSBERGE.

R.C. : Uele, Moto, Gangala na Bodio.

O. aerarius HAROLD.

R.C. : P.N.A. (Kaswabilenga, Kateke river, Kanonga).
Ruanda-Urundi : Rukoma, Kibungu.

O. aeruginosus KLUG.

R.C. : Haut Uele (Yebo Moto).

O. alexis KLUG.

R.C. : P.N.A. (Vitshumbi, monts Kasali, Katanda, Tshambi, Kanyazi, Kibumba, Kalinga, May ya Moto, Ndeko, Kanyabayongo, Mabenga, Kasali).
Ruanda-Urundi : Rukoma, Nduga, Kinazi, Rukara, Astrida, Tshuruyaga, Gitarama.

O. androcles JANSSENS.

R.C. : Mawambi.

O. artuosus GILLET.

R.C. : Katanga, Élisabethville, Stanleyville, P.N.U. (Mukana).

O. cryptodus GILLET.

R.C. : Kisantu, P.N.U. (Mabwe).
Ruanda-Urundi : Gitarama, Rukoma, Nduga.

O. cupreus CASTELNAU.

R.C. : Ubangi.

O. deceptor PÉRINGUEY.

R.C. : P.N.U. (Kaswabilenga, Kabwekanono, Kateke, Lusinga, Dipidi river, Mukana, Mabwe).

O. fabricii ROTH.

R.C. : P.N.U. (Kaswabilenga, Kankunda, Lusinga, Kateke river, Mabwe).

O. insulanus KOLBE.

Ruanda-Urundi : Wau Isle.

O. lamnifer GILLET.

R.C. : P.N.A. (Kabasha, Kanyazi, Kamande, Katanda, Kanyabayongo, Tshanzerwa).
Ruanda-Urundi : Rukoma, Nduga, Kinazi, Gitarama.

O. lycophron KLUG.

R.C. : Lulua, P.N.U. (Kateke river).

O. mnischeianus JANSSENS.

R.C. : Lukafu, P.N.U. (Lusinga, Karibwe, Mukana, Kaswabilenga, Kankunda, Kabwekanono, Kateke, Dipwa river, Kampadika river, Kafwe river, Kapelwa river, Mabwe, Kalumengongo).

O. monstrosus FELSCHÉ.

R.C. : Haut Uele, Stanleyville, P.N.U. (Mukana, Kaswabilenga).

O. nemoralis GILLET.

R.C. : Beni and Moera forest, Eala, P.N.A. (Tshambi, Kanyazi, Kalinga, Katanda, Binza, Tshanzerwa, contrefort est du Muhavura).

O. overlaeti JANSSENS.

R.C. : Kapanga, Bambesa.

O. pertubator PÉRINGUEY.

R.C. : Élisabethville, Mwene Ditu, P.N.U. (Munoi, Kaswabilenga).

O. podicinus BOUCOMONT.

R.C. : Kundelungu, P.N.U. (Lusinga, Mukana, Kaswabilenga, Kankunda, Kabwekanono, Dipidi river, Kiamakoto-Kiwakishi, Kapelwa river, Mabwe).

O. pyramus GILLET.

R.C. : Élisabethville, P.N.U. (Lusinga, Mukana, Kabwekanono, Kaswabilenga, Kafwe river).

O. reichei LANSBERGE.

Ruanda-Urundi : Rukoma, Nduga.

O. reichei LANSBERGE var. *rhodesianus* GILLET.

R.C. : P.N.U. (Kaswabilenga, Kateke, Mukana).

O. retrodentatus GILLET.

R.C. : Élisabethville, Haut-Luapula, P.N.U. (Lusinga, Mukana, Kaswabilenga, Kabwekanono, Kateke river, Kapandika, Kapelwa river, Kafwe river, Kalumengongo, Mabwe).

O. robustus BOHEMAN.

R.C. : P.N.A. (Tshambi, monts Kasali, Katanda, Kalinga, Vitshumbi, Kanyazi, Ninda, May ya Moto, Ndeko).

O. sphinx (FABRICIUS).

R.C. : P.N.A. (monts Kasali, Vitshumbi, Kalinga, Katanda, Tshambi, Kanyazi, Kibga, Katanda, May ya Moto, Ndeko, Kanyabayongo, Mabenga, Tshanzerwa), Ituri, P.N.U. (Kaswabilenga, Mabwe, Kateke river, Buye-Bala, Mukana).

Ruanda-Urundi : Tshuruyaga.

O. spinicrus FAIRMAIRE.

R.C. : Ituri.

O. subcrenatus KOLBE.

R.C. : P.N.A. (Tshambi, Burunga, Bitashimwa, Munagana, Sesero, Kundhuru ya Tshuve, Burambi, Gahinga, Ruhengeri, Kanyabayongo, Rutshuru, Kibga, Kiniha, Mudende, Mugongo, Mayumbu forest, Tshamugussa, Bweza).

Ruanda-Urundi : Shangugu, Rubengera, Tshuruyaga, Gitarama, Rukoma, Nduga, Ndiza.

O. sulcipennis FELSCHE.

R.C. : P.N.A. (Rutshuru, Nyarusambo, Kundhuru ya Tshuve, Ninda, Rwebeya valley, Kanyabayongo, N'Gando lake, Kibga, Mugongo, Mudende, Tshamugussa, Bweza).

O. uncinatoides JANSSENS.

R.C. : P.N.U. (Lusinga, Mukana, Kabwekanono, Kankunda, Kapelwa river, Kafwe river, Mabwe).

O. uncinatus KLUG.

R.C. : P.N.A. (Vitshumbi, Kalinga, Tshambi, Katanda, Mugongo).

Ruanda-Urundi : Gitarama, Rukoma, Nduga, Kinazi.

O. upembanus JANSSENS.

R.C. : P.N.U. (Kateke river).

O. vanderkelleni LANSBERGE.

R.C. : Lulua, P.N.A. (Kalinga, Tshambi, Munagana, Muhavura, Rwankeri, Ninda, Katanda, Binza, Kanyabayongo, Kibga, Mudende, Nyamuragira, Bweza, Tshamugussa), P.N.U. (Lusinga, Mukana, Kabwekanono, Kaswabilenga, Kateke river, Dipwa river, Katongo, Kapelwa river, Buye-Bala, Mabwe, Kalumengongo, Rubengera).

Ruanda-Urundi : Tshuruyaga, Gitarama, Rukoma, Nduga, Ndiza, Mayaga, Gatsibu.

O. viridulus BOHEMAN.

R.C. : P.N.A. (Vitshumbi, monts Kasali, Tshambi, Kalinga, Kanyazi, Kibga, Katanda, May ya Moto, Ndeko, Kanyabayongo), P.N.U. (Kaswabilenga, Mukana).

Ruanda-Urundi : Astrida, Tshuruyaga, Gitarama, Rukoma, Nduga, Mahembe.

O. vrydaghi JANSSENS.

R.C. : Uele.

O. wittei JANSSENS.

R.C. : P.N.A. (Burunga, Kamatembe, Katanda, Tshamugussa, monts Sesero, Kanyabayongo, Shamhuern).

Tribe ONTHOPHAGINI.

GENUS **PROAGODERUS** LANSBERGE.*P. armicollis* D'ORBIGNY.

R.C. : Kasindi.

P. auratus FABRICIUS.

R.C. : Kigoma, Moto, Dika, Doruma, Bambesa, Tukpwo, Bambili, Mahagi-Niareembe, Kasenyi, camp Rwindi, Nyanza.

P. brucei REICHE.

R.C. : Kisantu, Beni à Lesse, Sandoa, Tshibamba, Kapanga, Kipanga, Kinda, Élisabethville, Mayidi, camp Rwindi.

Ruanda-Urundi : Gabiro, Rubengera, Gitarama, Rukoma, Ndiza.

P. ceratotherium JANSSENS.

R.C. : Haut-Congo.

P. colmanti D'ORBIGNY.

R.C. : Sassa, Watsa to Niangara.

P. confossus D'ORBIGNY.

R.C. : Kindu, Kibombo, Lufulu.

P. cuspidatus D'ORBIGNY.

R.C. : Kisantu, Léopoldville.

P. elgoni D'ORBIGNY.

R.C. : Watsa, Abimva, Bomokandi, Nioka, Mahagi-Niarembe.

P. extensus HAROLD.

R.C. : Stanleyville to Kilo, Yebo.

P. fastosus D'ORBIGNY.

R.C. : Matadi, Ganda-Sundi, Kasamvu, Niali, Batasiala, Masinga, Luali, Tshela.

P. fossidorsis D'ORBIGNY.

R.C. : Mpala, Luembe, Sandoa.

P. gemmatus PÉRINGUEY.

R.C. : Ubemba, Madona, Kasinga, Lumba, Kapanga, Sandoa, Lushishi river, Kafakumba, Luashi.

P. gibbiramus D'ORBIGNY.

R.C. : Kisantu, Bambesa, Tshibamba, Kapanga, Kafakumba, Tshipasa, Élisabethville, Kaniama, Mutombo-Mukulu.

P. harpax FABRICIUS.

R.C. : Haut-Congo.

P. katualensis QUEDENFELDT.

R.C. : Cha-Katuala, Kamina, Sandoa, Kapanga, Luiza river, Kalani river, Tshibalaka, Lundje river, Kamelekese river, Katentania, Mayidi.

P. lallieri D'ORBIGNY.

R.C. : Bunkeya, Kapanga, Kafakumba, Élisabethville.

P. lallierianus JANSSENS.

R.C. : Bunkeya, Kafakumba, Kapanga (Lulua).

P. lujendae BATES.

R.C. : Katanga, Mufungwa-Sampwe, Kibenga-Baraka, Madona.

P. monochromus D'ORBIGNY.

R.C. : Flandria, Bokuma, Eala, Lodja, Malela, Yindi, Kunungu, Banania, Kindu, Lulua-bourg, Luebo, Kipali, Kondue.

P. multicornis D'ORBIGNY.

R.C. : Watsa to Niangara, Watsa, Mauda, Moto, Abimva, Bambesa.

P. opulentus D'ORBIGNY.

R.C. : Kapanga, Tshibamba, Lushala, Kalenge, Kafakumba.

P. overlaeti JANSSENS.

R.C. : Kapanga, Tshipasa, Tshibamba, Kafakumba, Kambaza, Kaniama.

P. panoplus BATES.

R.C. : Upemba, Kapanga, Kafakumba, Mwene-Ditu.

P. pegesimallus MARCUS.

R.C. : Kasongo.

P. praedentatus D'ORBIGNY.

R.C.

P. pseudoalcyon D'ORBIGNY.

R.C. : Bambesa, Yangambi.

P. quadrispinosus D'ORBIGNY.

R.C. : Sassa, Doruma.

P. rarus GUÉRIN.

R.C. : Sassa, Tshala, Kapanga, Tshipasa, Kalani river, Tshibamba, Tshibalaka, Kafakumba, Kepaza.

P. semiiris THOMSON.

R.C. : Ibembo, Yambata, Tua, Banga, Kikamba, Batasiala, Buta.

P. speculicollis QUEDENFELDT.

R.C. : between Matadi and Stanley pool, Kwamouth, Léopoldville, Mpala, Mayidi, bassin Lukuga, Dumbi, Sandoa, Kapanga, Luiza river, Kalani river, Kapelekese, Tshibalaka, Sandoa, Kundelungu, Ditanto.

P. subextensus KOLBE.

R.C. : Mwene-Ditu, Kafakumba, Tshibamba, Kapanga.

P. superbus D'ORBIGNY.

R.C. : Moanda, Kibamba, Musinga, Biabu.

P. taymansi D'ORBIGNY.

R.C. : Kasai, Kikwit.

P. trianguliceps D'ORBIGNY.

R.C. : Kapanga, Kafakumba, Dilolo.

P. unidens QUEDENFELDT.

R.C. : Kapanga, Sandoa.

Genus **DIASTELLOPALPUS** LANSBERGE.

D. balubanus KOLBE.

R.C.

D. basilobatus D'ORBIGNY.

Ruanda-Urundi : contrefort est du Muhavura, Rutovu, Tshuruyaga, Bururi.

D. conradti D'ORBIGNY.

R.C.

D. gilleti D'ORBIGNY.

R.C.

D. johnstoni WATERHOUSE.

Ruanda-Urundi : Rubengera, Gitarama, Rukoma, Ndiza.

D. laevibasis D'ORBIGNY.

R.C.

D. lamellicollis QUEDENFELDT.

Ruanda-Urundi : Rubengera, Gitarama, Rukoma, Nduga, Ndiza.

D. murrayi HAROLD.

R.C.

D. tridens FABRICIUS.

R.C.

Genus **CACCOBIUS** THOMSON.

C. crassus D'ORBIGNY.

R.C.

C. cribarius BOUCOMONT.

R.C.

C. gibbosulus D'ORBIGNY.

R.C.

C. inconspicuus FÄHRAEUS.

R.C.

C. seminulum KLUG.

R.C.

Genus **MILICHUS** PÉRINGUEY.

M. apicalis FÄHRAEUS.

Ruanda-Urundi : Gitarama, Rukoma, Nduga.

M. inaequalis BOUCOMONT.

R.C.

M. picticollis GERSTAECKER.

Ruanda-Urundi : Rubengera, Gitarama, Rukoma, Nduga, Ndiga, Bururi.

Genus **CACCOPHILUS** JEKEL.*C. fuliginosus* ROTH.

Ruanda-Urundi : Shangugu, Rubengera, Gitarama, Rukoma.

C. obtusus FAHRAEUS.

Ruanda-Urundi : Rubengera.

Genus **ONTHOPHAGUS** LATREILLE.*O. abruptus* D'ORBIGNY.

R.C.

O. alienus FREY.

R.C.

O. altilamina D'ORBIGNY.

R.C.

O. angularis D'ORBIGNY.

R.C.

O. apicohirtus D'ORBIGNY.

R.C.

O. armicollis D'ORBIGNY.

R.C.

O. atrostriatus D'ORBIGNY.

R.C.

O. axillaris BOHEMAN.

Ruanda-Urundi : Dendezi

O. balubanus KOLBE.

R.C.

O. bequaerti D'ORBIGNY.

R.C.

O. bidentifrons D'ORBIGNY.

R.C.

O. bifidus REICHE.

R.C.

O. bimarginatus D'ORBIGNY.

R.C.

O. bisbicornis D'ORBIGNY.

R.C.

O. bituber D'ORBIGNY.

R.C.

O. blanchardi HAROLD.

Ruanda-Urundi : Rubengera, contrefort Est Muhavura, Gitarama, Rukoma, Nduga, Ndiza.

O. callosipennis BOUCOMONT.

R.C.

O. carbonarius KLUG.

R.C.

O. catta FABRICIUS.

Ruanda-Urundi : Rukoma, Nduga.

O. chlorophanus D'ORBIGNY.

Ruanda-Urundi : Rubengera, Rukoma.

O. cinctipennis QUEDENFELDT.

R.C.

O. cometes BATES.

R.C.

O. consobrinus PÉRINGUEY.

R.C.

O. contiguicornis D'ORBIGNY.

Ruanda-Urundi : terr. Ruhengeri.

O. corniculatus REICHE.

Ruanda-Urundi : Rubengera, Gitarama, Rukoma.

O. costatus D'ORBIGNY.

R.C.

O. cupreovirens D'ORBIGNY.

R.C.

O. delicatus D'ORBIGNY.

R.C.

O. denticulatus D'ORBIGNY.

R.C.

O. depilis D'ORBIGNY.

R.C.

O. depressifrons D'ORBIGNY.

R.C.

- O. dicerus* D'ORBIGNY.
R.C.
- O. duvivieri* D'ORBIGNY.
R.C.
- O. epilamprus* BATES.
R.C.
- O. erectinasus* D'ORBIGNY.
R.C.
- O. fallax* D'ORBIGNY.
Ruanda-Urundi : Usumbura.
- O. fimetarius* ROTH.
Ruanda-Urundi : Rubengera, Gitarama, Rukoma, Nduga, Kinazi, Gatsibu.
- O. flavorufus* D'ORBIGNY.
R.C.
- O. foveatus* FREY.
R.C.
- O. foveicollis* BOUCOMONT.
R.C.
- O. fungicola* D'ORBIGNY.
R.C.
- O. fuscatus* D'ORBIGNY.
R.C.
- O. gibbidorsis* D'ORBIGNY.
R.C.
- O. gibbifrons* D'ORBIGNY.
R.C.
- O. gonopygus* D'ORBIGNY.
R.C.
- O. helciatus* HAROLD.
R.C.
- O. hemichalceus* D'ORBIGNY.
R.C.
- O. hirtellus* FREY.
R.C.

- O. hulstaerti* BOUCOMONT.
R.C.
- O. imberbis* D'ORBIGNY.
R.C.
- O. impressicollis* BOHEMAN.
R.C.
- O. insignis* PÉRINGUEY.
R.C.
- O. janssensi* FREY.
R.C.
- O. jugicola* D'ORBIGNY.
Ruanda-Urundi : Kisenyi, Rubengera, Gitarama, Rukoma, Nduga, Nyabikenke.
- O. juvencus* KLUG.
Ruanda-Urundi : Rubengera, Gitarama, Rukoma.
- O. kassaicus* D'ORBIGNY.
R.C.
- O. latestriatus* D'ORBIGNY.
R.C.
- O. lemekensis* ssp. *hamatus* FREY.
R.C.
- O. longegranus* FREY.
R.C.
- O. mediofuscatus* D'ORBIGNY.
R.C.
- O. minax* D'ORBIGNY.
R.C.
- O. mixticeps* D'ORBIGNY.
R.C.
- O. naevius* D'ORBIGNY.
R.C.
- O. ocellidorsis* D'ORBIGNY.
R.C.
- O. orthocerus* THOMSON.
R.C.
- O. parcenotatus* D'ORBIGNY.
R.C.

- O. parcepictus* D'ORBIGNY.
Ruanda-Urundi : Gitarama
- O. parumnotatus* FÄHRAEUS.
R.C.
- O. pauliani* FREY.
R.C.
- O. phanaeomorphus* JANSSENS.
R.C.
- O. picatus* D'ORBIGNY.
Ruanda-Urundi : Astrida.
- O. pictisternum* D'ORBIGNY.
R.C.
- O. pictus* REITTER.
R.C.
- O. planaticeps* D'ORBIGNY.
R.C.
- O. praestans* PÉRINGUEY.
R.C.
- O. pseudobidens* D'ORBIGNY.
R.C.
- O. pugionatus* FÄHRAEUS.
R.C.
- O. quadricuspis* D'ORBIGNY.
Ruanda-Urundi : Rubengera, Gitarama, Bururi.
- O. raffrayi* HAROLD.
Ruanda-Urundi : Shangugu, Rubengera, Kisenyi, Gitarama, Rukoma, Nduga, Nyabi-kenke.
- O. rectestriatus* D'ORBIGNY.
R.C.
- O. reticulatus* D'ORBIGNY.
R.C.
- O. rhyncophorus* PÉRINGUEY.
R.C.
- O. rufaticollis* D'ORBIGNY.
R.C.
- O. rufonotatus* D'ORBIGNY.
Ruanda-Urundi : Rubengera, Rukoma.

-
- O. schoutedeni* BOUCOMONT.
R.C.
- O. semicirculifer* D'ORBIGNY.
R.C.
- O. semicroceus* D'ORBIGNY.
R.C.
- O. sericeicollis* BOUCOMONT.
R.C.
- O. simpliciceps* D'ORBIGNY.
R.C.
- O. splendidus* BOUCOMONT.
R.C.
- O. stuhlmanni* D'ORBIGNY.
Ruanda-Urundi : Rukoma.
- O. sulcipennis* D'ORBIGNY.
Ruanda-Urundi : Kisenyi, Gitarama, Nyabikenke, Mahembe.
- O. subdivisus* D'ORBIGNY.
R.C.
- O. subocellatus* D'ORBIGNY.
Ruanda-Urundi : Gatsibu.
- O. sutiliceps* D'ORBIGNY.
R.C.
- O. tigrinus* D'ORBIGNY.
R.C.
- O. tridentipes* D'ORBIGNY.
R.C.
- O. tschoffeni* D'ORBIGNY.
R.C.
- O. umbratus* D'ORBIGNY.
R.C.
- O. variatus* D'ORBIGNY.
R.C.
- O. variгранosus* D'ORBIGNY.
R.C.
- O. vinctoides* FREY.
R.C.
- O. viviensis* D'ORBIGNY.
R.C.