

PLATE I

EXPLANATION OF PLATE 1.

FIG. 1. — *Bufo lemairei* BOULENGER.

Area at the junction of the Mubale river and the Munte river, altitude 1.480 m, 12.V.1947.

Photo: G. F. DE WITTE, 243.
About 6/10 nat. size.

(Coll. Inst. Parcs Nat. Congo Belge.)

FIG. 2. — *Bufo regularis* REUSS

Mabwe, altitude 585 m, 15.XI.1948.

Photo: G. F. DE WITTE, 1470.
About 6/10 nat. size.

(Coll. Inst. Parcs Nat. Congo Belge.)

FIG. 3. — *Bufo carens* A. SMITH.

Mabwe, altitude 585 m, 26.XII.1948.

Photo: W. ADAM, 712.
About 6/10 nat. size.

(Coll. Inst. Parcs Nat. Congo Belge.)

FIG. 4. — *Rana tuberculosa* BOULENGER.

Spring-head of the Muye river, altitude 1.480 m, 28.XI.1947.

Photo: G. F. DE WITTE, 1078.
About 7/10 nat. size.

(Coll. Inst. Parcs Nat. Congo Belge.)



1. *Bufo lemairei* BOULENGER.



2. *Bufo regularis* REUSS.



3. *Bufo carens* A. SMITH.

4. *Rana tuberculosa*
BOULENGER.

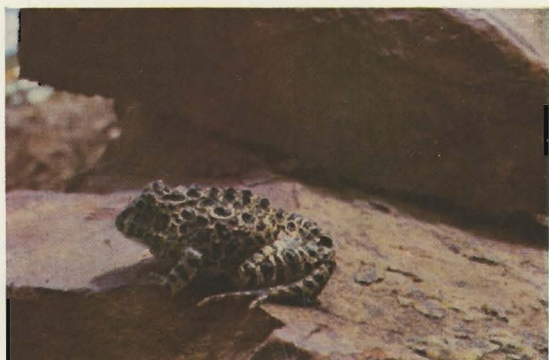


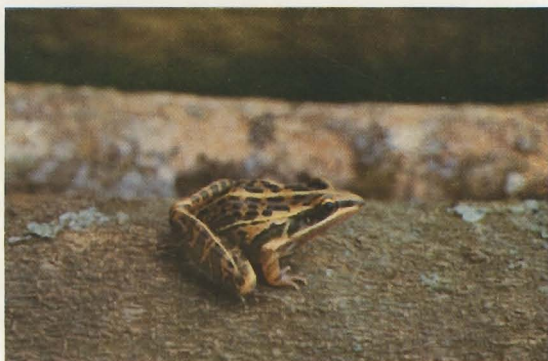
PLATE II

EXPLANATION OF PLATE II.

- FIG. 1. — *Rana oxyrhyncha* A. SMITH.
Kaswabilenga, altitude 700 m, 2.X.1947.
Photo: G. F. DE WITTE, 1078. (Coll. Inst. Parcs Nat. Congo Belge.)
About 5/10 nat. size.
- FIG. 2. — *Rana porosissima* STEINDACHNER.
Kabwe at the Muye river, altitude 1.320 m, 7.V.1948.
Photo: W. ADAM, 221. (Coll. Inst. Parcs Nat. Congo Belge.)
About 5/10 nat. size.
- FIG. 3. — *Rana subpunctata* BOCAGE.
Mabwe, altitude 585 m, 22.XI.1948.
Photo: W. ADAM, 638. (Coll. Inst. Parcs Nat. Congo Belge.)
About 7/10 nat. size.
- FIG. 4. — *Rana albolabris lemairei* WITTE.
Area at the junction of the Mubale river and the Munte river, altitude
1.480 m, V.2.1947
Photo: G. F. DE WITTE, 123. (Coll. Inst. Parcs Nat. Congo Belge.)
About 5/10 nat. size.
-



1. *Rana oxyrhyncha*
A. SMITH.



2. *Rana porosissima*
STEINDACHNER.



3. *Rana subpunctata* BOCAGE.



4. *Rana albolabris lemairei*
WITTE.

PLATE III

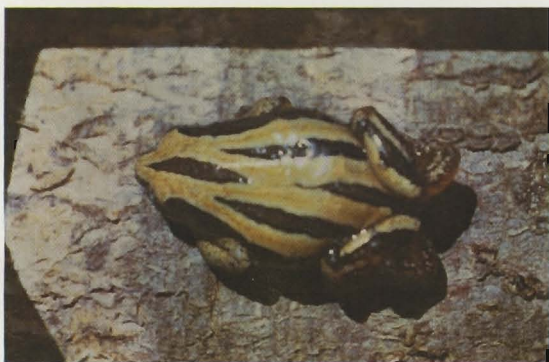
EXPLANATION OF PLATE III.

- FIG. 1. — *Leptopelis bocagei lebeaui* (WITTE).
Mabwe, altitude 585 m, 15.XI.1948.
Photo: G. F. DE WITTE, 1453. (Coll. Inst. Parcs Nat. Congo Belge.)
About 5/10 nat. size.
- FIG. 2. — *Leptopelis bocagei lebeaui* (WITTE).
Area at the junction of the Mubale river and the Munte river, altitude
1.480 m, 2.V.1947.
Photo: G. F. DE WITTE. (Coll. Inst. Parcs Nat. Congo Belge.)
About 6/10 nat. size.
- FIG. 3. — *Kassina wittei* (LAURENT).
Mukelengia (savanna), altitude 1.750 m, 13.IV.1948.
Photo: W. ADAM, 136. (Coll. Inst. Parcs Nat. Congo Belge.)
× about 1,8.
- FIG. 4. — *Phrynomerus bifasciatus* A. SMITH.
Mabwe, altitude 585 m, 17.XII.1948.
Photo: G. F. DE WITTE, 1551. (Coll. Inst. Parcs Nat. Congo Belge.)
About 8/10 nat. size.
-



1. *Leptopelis bocagei lebeaui*
(WITTE).

2. *Leptopelis bocagei lebeaui*
(WITTE).



3. *Kassina wittei* (LAURENT)

4. *Phrynomerus bifasciatus*
A. SMITH.

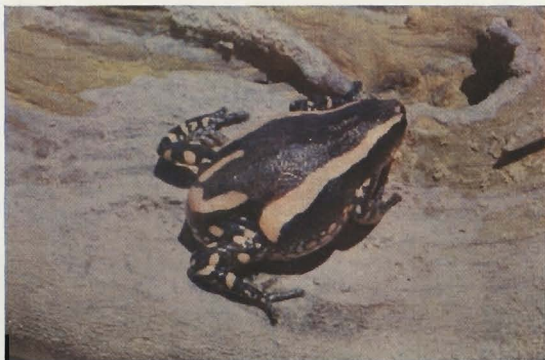


PLATE IV

EXPLANATION OF PLATE IV.

- FIG. 1. — *Xenopus laevis poweri* HEWITT.
Kanonga, altitude 695 m, 30.IX.1947.
About 9/10 nat. size.
- FIG. 2. — *Bufo melanopleura* n. sp.
Kankunda river (tributary on the left of the Lupiala river), altitude 1.300 m,
17.XI.1947.
× about $2\frac{1}{3}$.
- FIG. 3. — *Bufo ushoranus* LOVERIDGE
Kankunda river (tributary on the left of the Lupiala river), altitude 1.300 m,
17.XI.1947.
× about 2.
- FIG. 4. — *Rana tuberculosa* BOULENGER.
Spring-head of the Muye river, altitude 1.630 m, 28.XI.1947.
× about 1,1.
- FIG. 5. — *Rana ornata moeruensis* BOULENGER.
Mabwe, altitude 585 m, 17.XII.1948.
About 7/10 nat. size.
- FIG. 6. — *Rana fuscigula* DUMERIL et BIBRON.
Kaswabilenga (Lufira), altitude 680 m, 29.X.1947.
Photos: G. F. DE WITTE. (Coll. Inst. Parcs Nat. Congo Belge.)
About 7,5/10 nat. size.
-



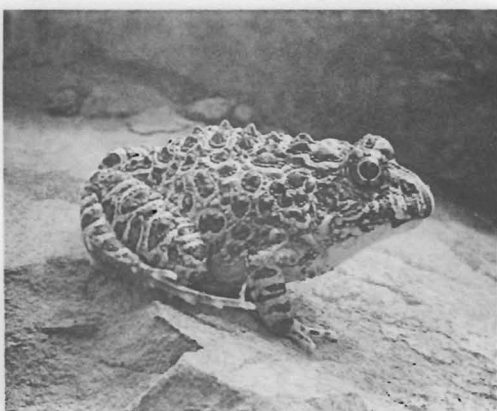
1. *Xenopus laevis poweri* HEWITT.



2. *Bufo melanopleura* n. sp.



3. *Bufo ushoranus* LOVERIDGE.



4. *Rana tuberculosa* BOULENGER.



5. *Rana ornata moeruensis* BOULENGER.

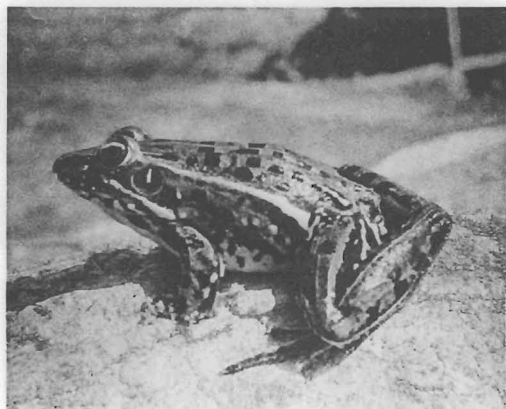


6. *Rana fuscigula* DUMERIL & BIBRON.

PLATE V

EXPLANATION OF PLATE V.

- FIG. 1. — *Rana subpunctata* BOCAGE.
Mabwe, altitude 585 m, 22.XI.1948.
About 8/10 nat. size.
- FIG. 2. — *Arthroleptis stenodactylus* PFEFFER.
Mabwe, altitude 585 m, 18.XI.1948.
× about 1,4.
- FIG. 3. — *Arthroleptis globosa* WITTE.
Kankunda river (tributary on the left of the Lupiala river), altitude 1.300 m,
17.XI.1947.
× about 2,1.
- FIG. 4. — *Phrynobatrachus anotis* n. sp.
Lusinga, altitude 1.810 m, 20.IV.1947.
× about 1,8.
- FIG. 5. — *Phrynobatrachus cryptotis* n. sp.
Kaziba (tributary on the left of the Mueleshi river), altitude 1.140 m, 15.II.1948.
× about 2,8.
- FIG. 6. — *Phrynobatrachus gutturosus* CHABANAUD.
Lusinga (marsh of Kapero), altitude 1.640 m, 9.I.1948.
Photos: G. F. DE WITTE. (Coll. Inst. Parcs Nat. Congo Belge.)
× about 1,8.
-



1. *Rana subpunctata* BOCAGE.



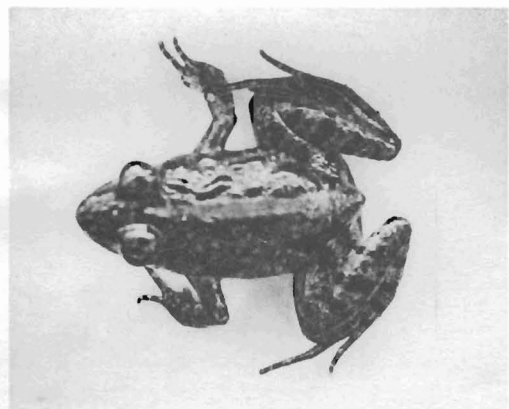
2. *Arthroleptis stenodactylus* PFEFFER.



3. *Arthroleptis globosa* WITTE.



4. *Phrynobatrachus anotis* n. sp.



5. *Phrynobatrachus cryptotis* n. sp.



6. *Phrynobatrachus gutturosus* CHABANAUD.

PLATE VI

EXPLANATION OF PLATE VI.

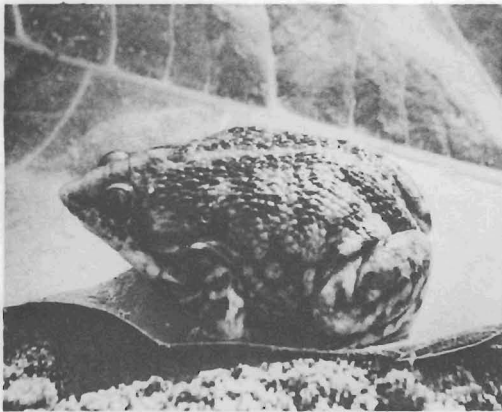
- FIG. 1. — *Phrynobatrachus natalensis* SMITH.
Lusinga, altitude 1.810 m, 12.IV.1947.
× about 1,8.
- FIG. 2. — *Phrynobatrachus parvulus* BOULENGER.
Kaziba (tributary on the left of the Mueleshi river), altitude 1.140 m, 15.II.1948.
× about 3.
- FIG. 3. — *Hemisis marmoratus* PETERS.
Mabwe, altitude 585 m, 18.I.1949.
About 1/1.
- FIG. 4. — *Hemisis marmoratus* PETERS.
Area at the junction of the Mubale river and the Munte river, altitude
1.480 m, 2.V.1947.
About 9/10 nat. size.
- FIG. 5. — *Hemisis marmoratus* PETERS.
Kaswabilenga (Lufira river), altitude 700 m, 27.X.1947. Lukawe river (tributary
on the right of the Lufira river).
× about 1,5.
- FIG. 6. — *Kassina senegalensis* DUMERIL et BIBRON.
Lusinga (marsh of Kapore) altitude 1.640 m, 9.I.1948.
Photos: G. F. DE WITTE. (Coll. Inst. Parcs Nat. Congo Belge.)
× about 1,4.
-



1. *Phrynobatrachus natalensis* SMITH.



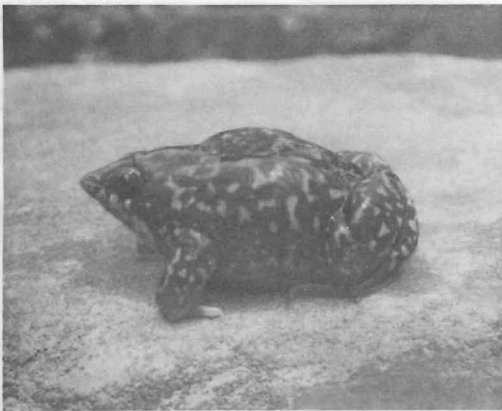
2. *Phrynobatrachus parvulus* BOULENGER.



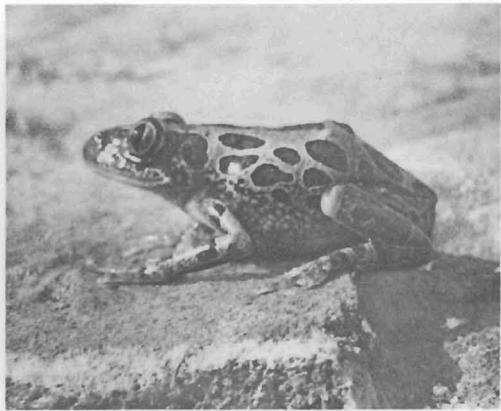
3. *Hemisis marmoratus* PETERS.



4. *Hemisis marmoratus* PETERS.



5. *Hemisis marmoratus* PETERS.



6. *Kassina senegalensis* DUMERIL & BIBRON.

PLATE VII

EXPLANATION OF PLATE VII.

FIG. 1. — Southern shore of Lake Upemba towards Kisungi. South of Mabwe, altitude 585 m, 18.1.1949.

Photo: G. F. DE WITTE, 2.753.

(Coll. Inst. Parcs Nat. Congo Belge.)

FIG. 2. — Lufira river near Kaswabilenga, altitude 700 m, 3.X-8.XI.1947.

Photo: G. F. DE WITTE, 2.159.

(Coll. Inst. Parcs Nat. Congo Belge.)



Fig. 1. — Southern shore of Lake Upemba towards Kisungi.



Fig. 2. — Lufira river near Kaswabilenga.

PLATE VIII

EXPLANATION OF PLATE VIII.

FIG. 1. — Lufira river and Mount Sombwe. View near the North below the Lukoka river, altitude 750 m, 14.VII.1949.

Photo: W. ADAM, 657.

(Coll. Inst. Parcs Nat. Congo Belge.)

FIG. 2. — Kankunda river. View towards the Lufira valley, altitude 1,360 m, 10-28.XI.1947.

Photo: G. F. DE WITTE 2.272.

(Coll. Inst. Parcs Nat. Congo Belge.)

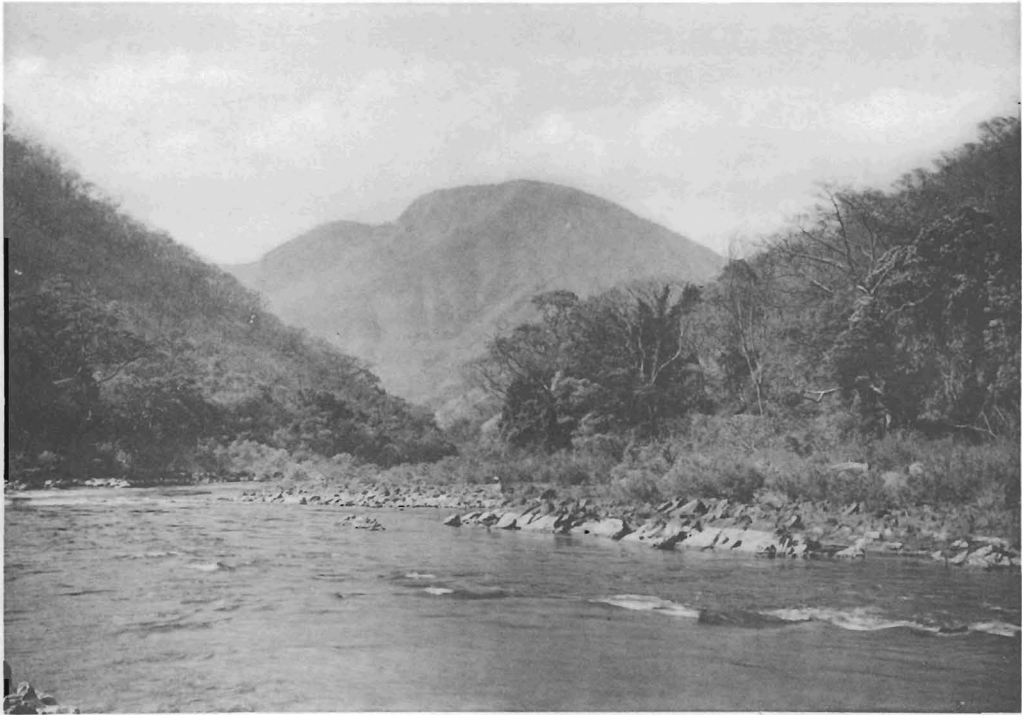


Fig. 1. — Lufira river and Mount Sombwe.



Fig. 2. — Kankunda river. View towards the Lufira valley.

PLATE IX

EXPLANATION OF PLATE IX.

FIG. 1. — Forest gallery along the Kanonga river, altitude 695 m, 12-23.II.1949.

Photo: G. F. DE WITTE, 2.634.

(Coll. Inst. Parcs Nat. Congo Belge.)

FIG. 2. — Mukana pool. Forest gallery, altitude 1,810 m, 13.IV.1947.

Photo: G. F. DE WITTE, 1.832.

(Coll. Inst. Parcs Nat. Congo Belge.)



Fig. 1. — Forest gallery along the Kanonga river.

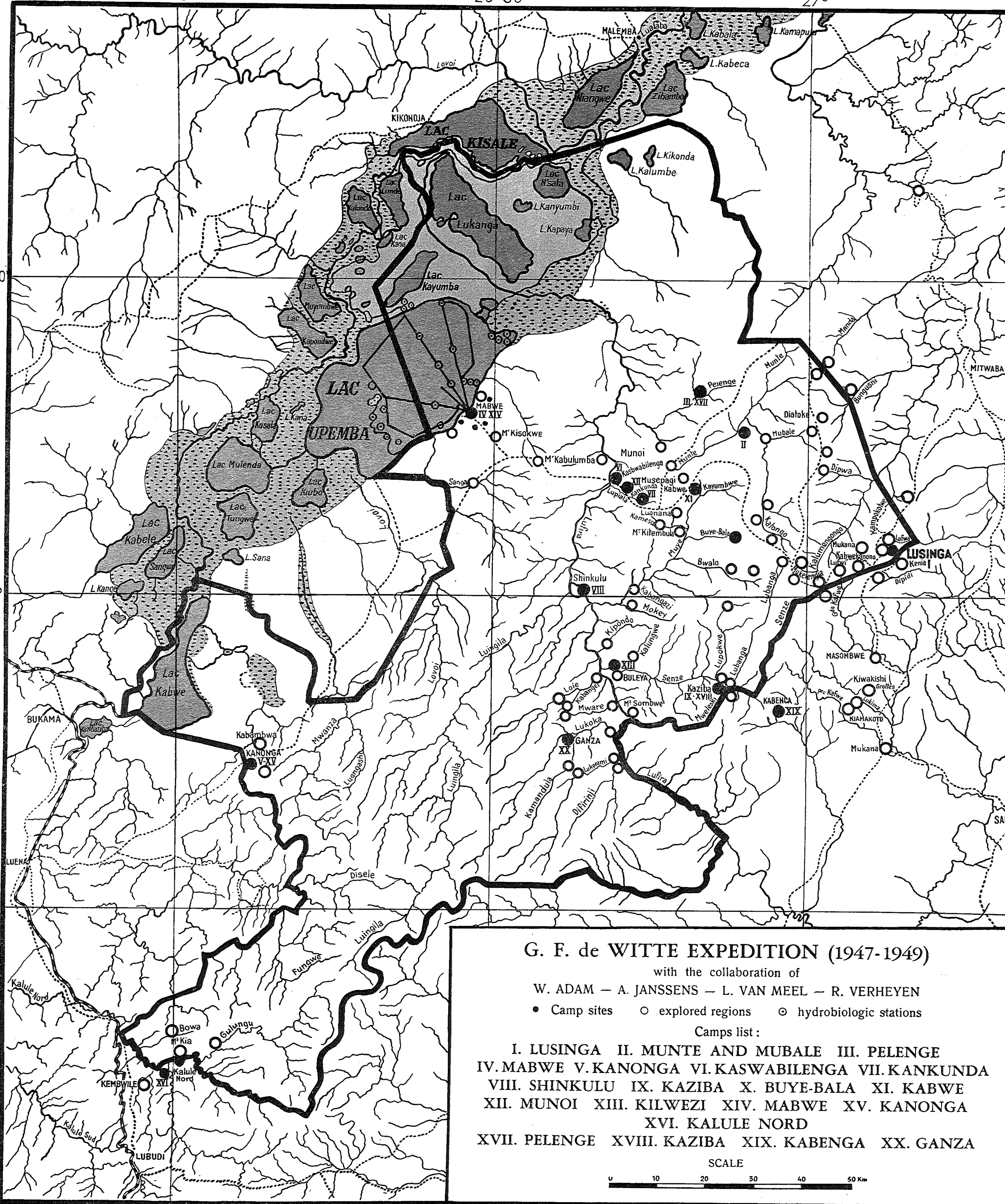


Fig. 2. — Mukana pool. Forest gallery.

26°

26°30'

27°



G. F. de WITTE EXPEDITION (1947-1949)

with the collaboration of

W. ADAM — A. JANSSENS — L. VAN MEEL — R. VERHEYEN

• Camp sites ○ explored regions ⊙ hydrobiologic stations

Camps list :

- I. LUSINGA II. MUNTE AND MUBALE III. PELENGE
- IV. MABWE V. KANONGA VI. KASWABILENGA VII. KANKUNDA
- VIII. SHINKULU IX. KAZIBA X. BUYE-BALA XI. KABWE
- XII. MUNOI XIII. KILWEZI XIV. MABWE XV. KANONGA
- XVI. KALULE NORD
- XVII. PELENGE XVIII. KAZIBA XIX. KABENGA XX. GANZA

SCALE



26°

26° 30'

27°

Published September 15, 1959.
