

PLATE I

EXPLANATION OF PLATE I.

(All figures drawn with the aid of the camera lucida.)

FIG. 1. — *Plectus sambesii* MICOLETZKY : head and neck of ♀.

FIG. 2. — Id. : ♀ tail.

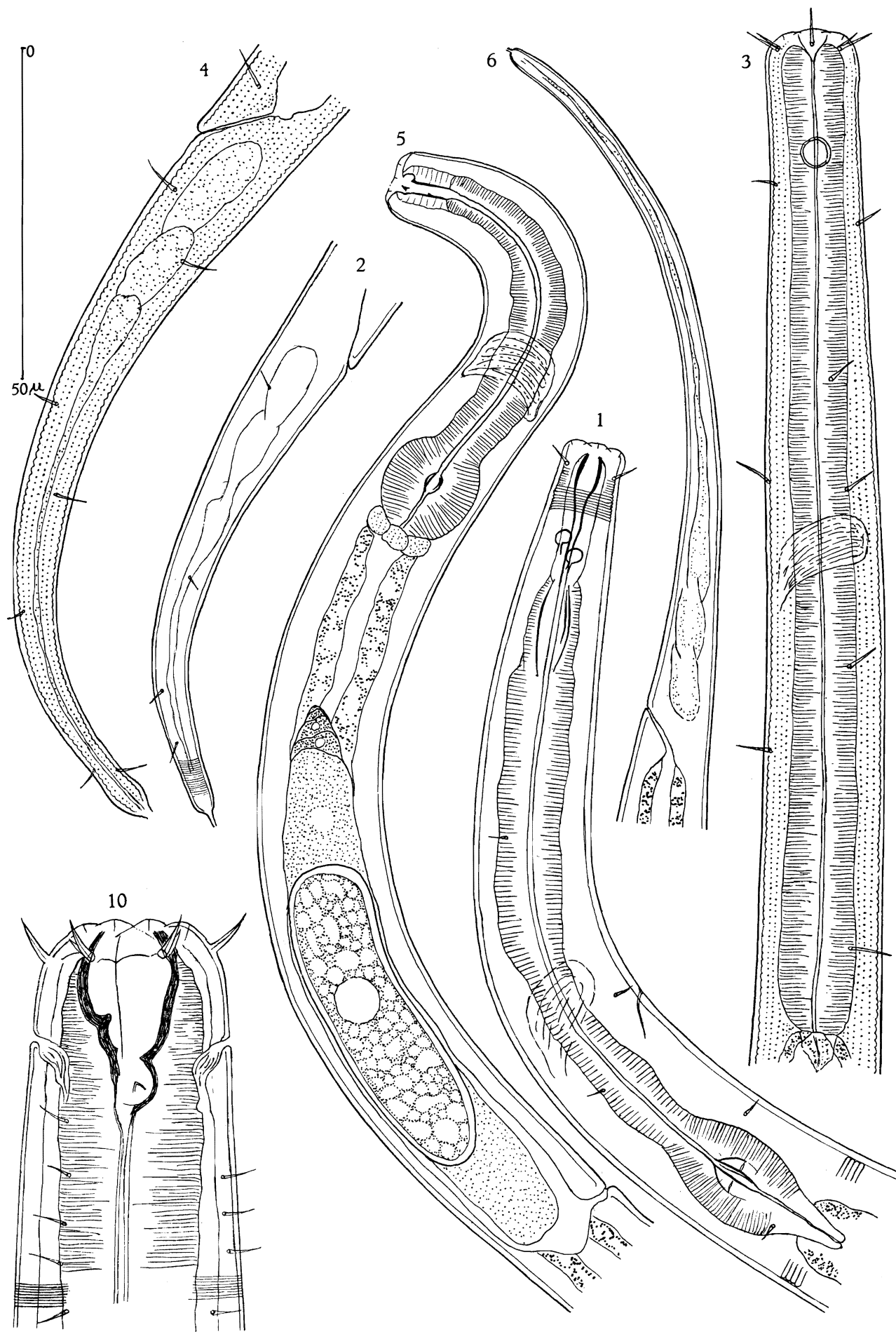
FIG. 3. — *Monhystera mwerazii* n. sp. : head and neck of ♀.

FIG. 4. — Id. : ♀ tail.

FIG. 5. — *Monachromadora monhysteroides* W. SCHNEIDER : anterior part of the ♀ body.

FIG. 6. — Id. : ♀ tail.

FIG. 10. — *Trilobus graciloides* aff. DADAY : ♀ head.



A. H. MEYL. — Freelifving Nematodes.

PLATE II

EXPLANATION OF PLATE II.

(All figures drawn with the aid of the camera lucida.)

FIG. 7. — *Ironus macramphis* SCHUURMANS STEKHOVEN and TEUNISSEN : ♀ head and anterior part of the neck.

FIG. 8. — Id. : region of the vulva and egg.

FIG. 9. — Id. : ♀ tail.

FIG. 11. — *Trilobus graciloides* aff. DADAY : ♀ tail-end.

FIG. 12. — *Mononchus allgéni* n. sp. : ♀ head.

FIG. 13. — Id. : posterior branch of the gonad with egg.

FIG. 14. — Id. : ♀ tail.

FIG. 15. — *Chrysonema luetichau* n. sp. : ♀ head to the end of the spear extensions.

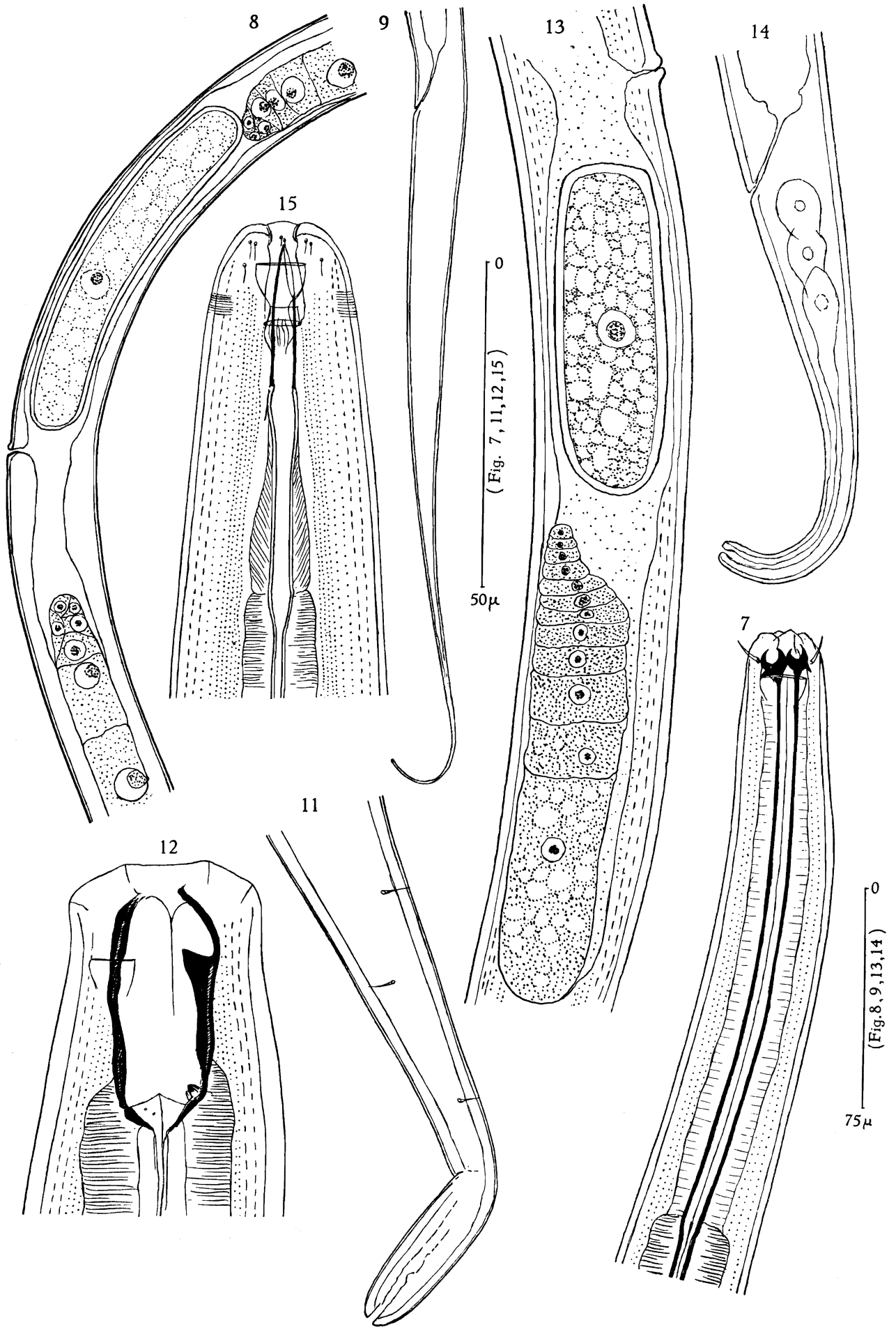


PLATE III

EXPLANATION OF PLATE III.

(All figures drawn with the aid of the camera lucida.)

FIG. 16. — *Chrysonema luettichau* n. sp. : ♀ head and neck.

FIG. 17. — Id. : vulvular region and egg.

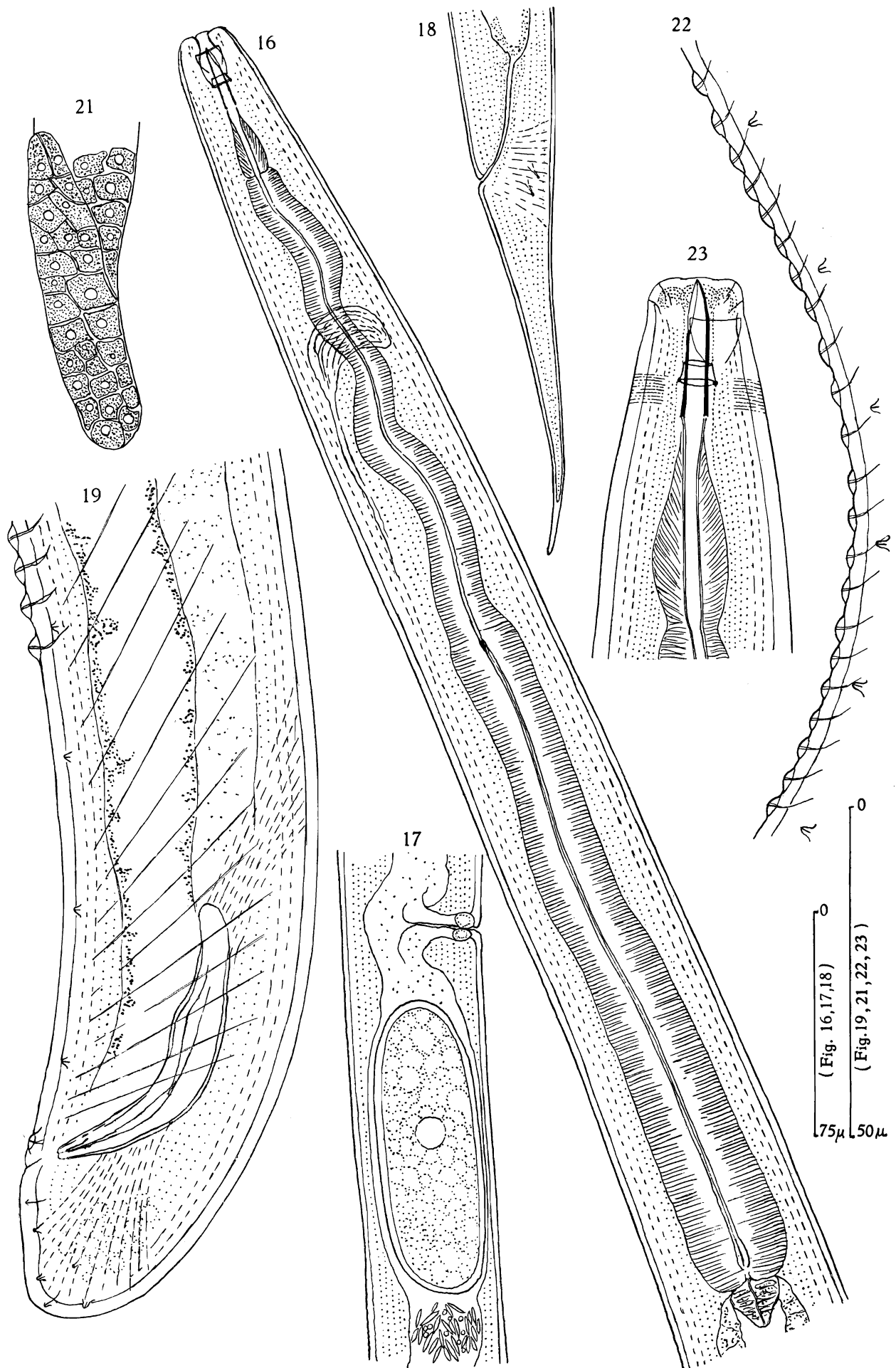
FIG. 18. — Id. : ♀ tail.

FIG. 19. — Id. : ♂ tail and beginning of supplement series.

FIG. 21. — Id. : reflexed part of the ♂ gonad.

FIG. 22. — Id. : supplement series.

FIG. 23. — *Dorylaimus acris* THORNE : ♀ head to the end of spear extensions.



EXPLANATION OF PLATE IV.

(All figures drawn with the aid of the camera lucida.)

- FIG. 20. — *Chrysonema luettichau* n. sp. : posterior part of ♂ body with the copulatory apparatus.
- FIG. 24. — *Dorylaimus acris* THORNE : ♀ tail.
- FIG. 25. — *Dorylaimus conurus* THORNE : ♀ head to the end of spear-extensions.
- FIG. 26. — Id. : ♀ tail.
- FIG. 27. — Id. : ♂ supplement series.
- FIG. 28. — *Dorylaimus flavomaculatus* VON LINSTOW : ♀ head to the end of the spear-extensions.
- FIG. 29. — Id. : cardia-region.
- FIG. 30. — Id. : rectum and prerectum of ♀.
- FIG. 31. — Id. : tail end of ♀.
-

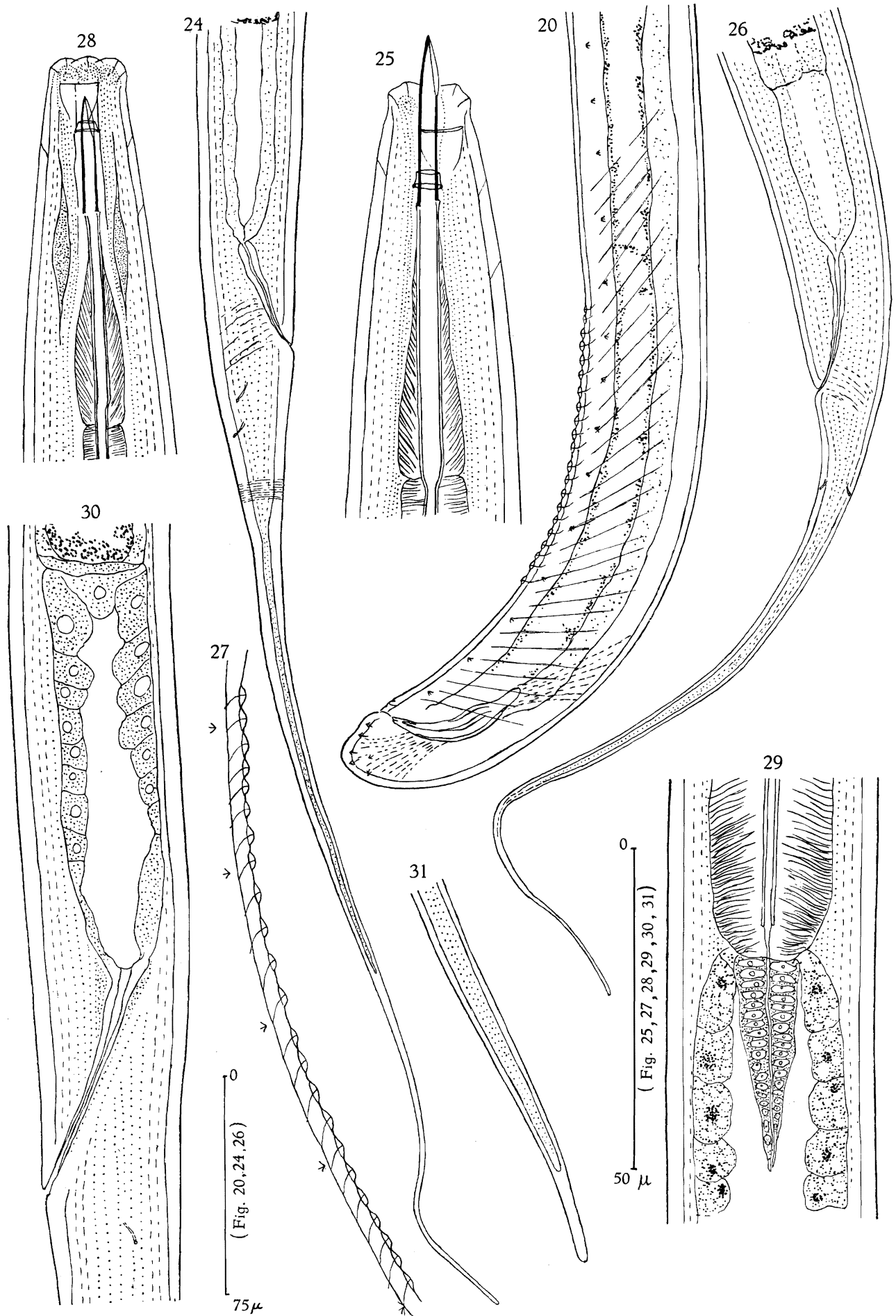


PLATE V

EXPLANATION OF PLATE V.

(All figures drawn with the aid of the camera lucida.)

FIG. 32. — *Dorylaimus stagnalis* aff. DUJARDIN : ♀ head.

FIG. 33. — *Actinolaimus omer-cooperi* aff. FILIPJEV : ♀ head.

FIG. 34. — *Actinolaimus schuurmans-stekhoveni* n. sp. : ♀ head.

FIG. 36. — *Actinolaimus straeleni* n. sp. : region of the esophagus from the nerve-ring to the beginning of the gradual expansion.

FIG. 37. — Id. : two eggs in the uterus.

FIG. 38. — Id. : ♀ tail.

FIG. 43. — *Actinolaimus taylori* n. sp. : ♀ head.

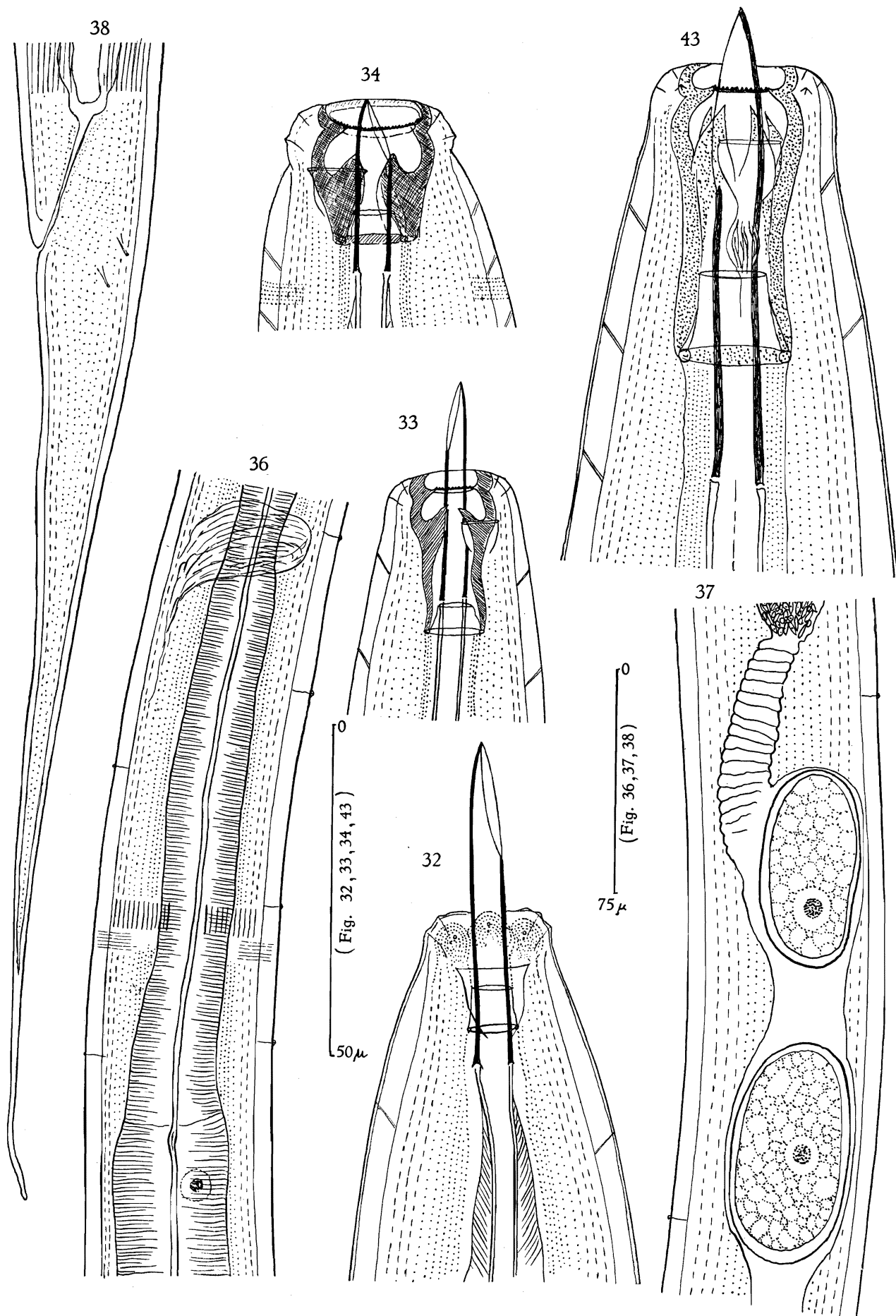


PLATE VI

EXPLANATION OF PLATE VI.

(All figures drawn with the aid of the camera lucida.)

FIG. 35. — *Actinolaimus straeleni* n. sp. : ♀ head.

FIG. 39. — Id. : posterior part of the ♂ body with copulatory apparatus and tail.

FIG. 40. — Id. : ♂ tail and spicular apparatus.

FIG. 41. — Id. : supplementary organs of a ♂ with 12 papillar organs between first and second fascicle.

FIG. 44. — *Actinolaimus tenuis* W. SCHNEIDER : ♀ head.

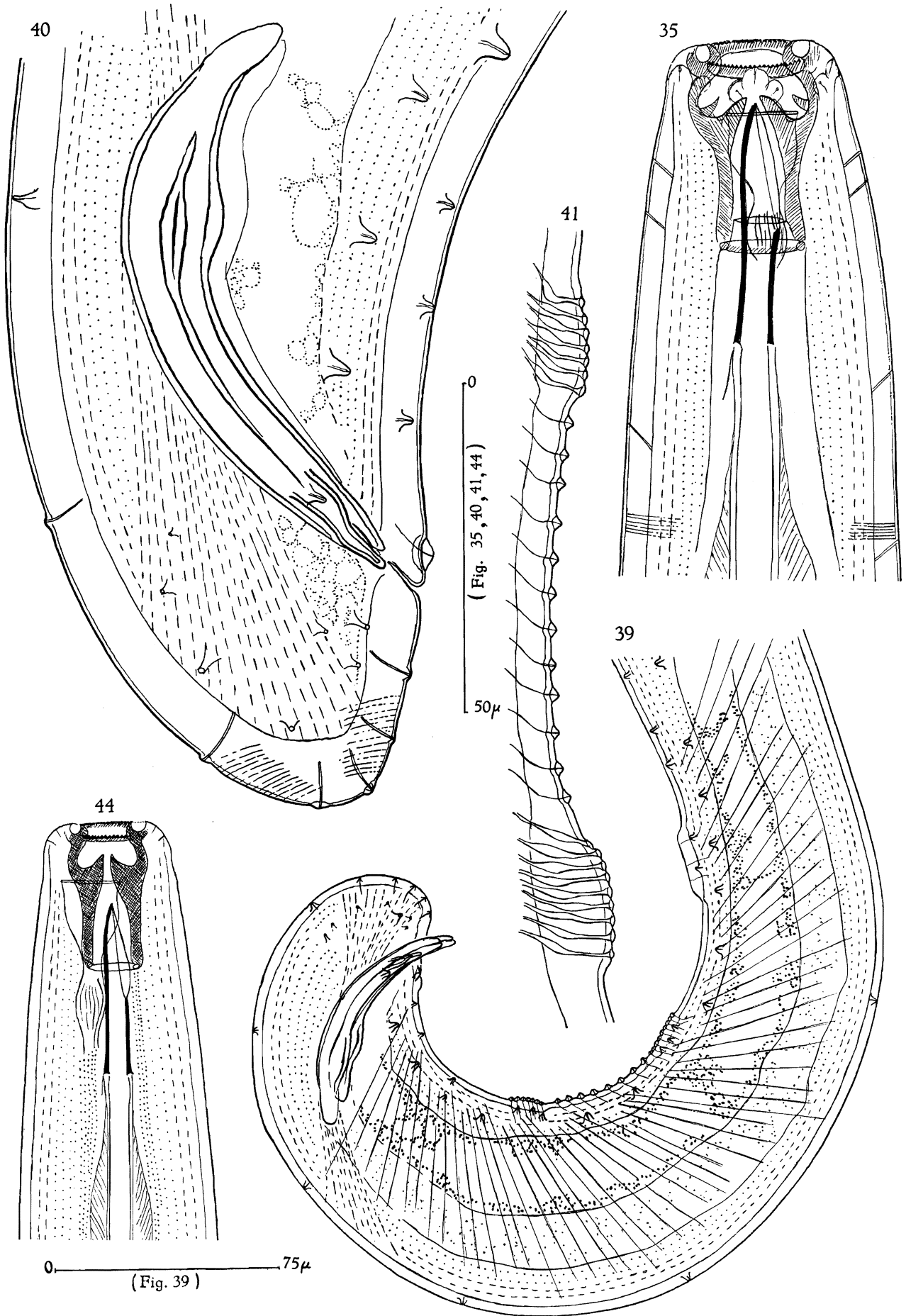


PLATE VII

EXPLANATION OF PLATE VII.

(All figures drawn with the aid of the camera lucida.)

- FIG. 42. — *Actinolaimus straeleni* n. sp. : supplementary organs of a ♂.
- FIG. 45. — *Actinolaimus tenuis* W. SCHNEIDER : ♀ tail.
- FIG. 46. — Id. : posterior part of the ♂ body from the beginning of the prerectum to the tail end.
- FIG. 47. — Id. : head of a moulting young ♂ (notice the slightly smaller spear-aperture of the original spear!).
- FIG. 49. — *Actinolaimus tenuis* var. *brevicaudatus* W. SCHNEIDER : ♀ tail.
- FIG. 52. — *Metactinolaimus leloupi* n. g. n. sp. : head contour of a ♀ with spear and amphid.
-

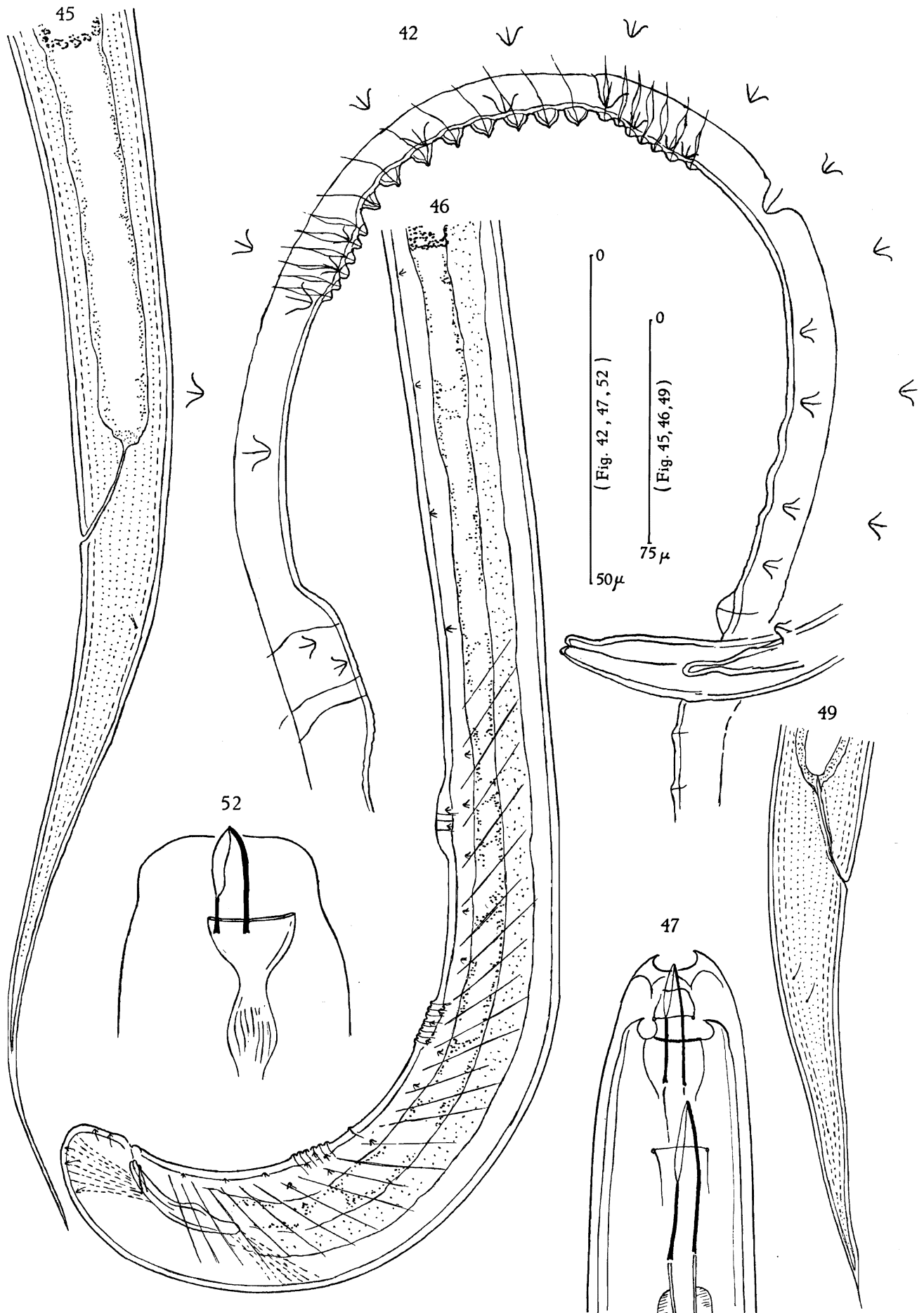


PLATE VIII

EXPLANATION OF PLATE VIII.

(All figures drawn with the aid of the camera lucida.)

FIG. 48. — *Actinolaimus tenuis* W. SCHNEIDER : tail of a moulting ♂.

FIG. 50. — *Metactinolaimus leloupi* n. g. n. sp. : ♂ head to the end of spear-extensions.

FIG. 51. — Id. : ♀ head.

FIG. 53. — Id. : ♀ tail.

FIG. 54. — Id. : posterior part of the ♂ body from the beginning of the prerectum to tail-end.

FIG. 55. — Id. : sperms.

